

YOUR NEAREST TRADESMART MEMBER IS:



# JSTM Trade Tools

TRUSTED BRANDS, BETTER SERVICE

WWW.TRADESMART.NET.AU

1 JULY - 30 SEPTEMBER 2026

# WORKSHOP ESSENTIALS

## P/N: IGEN2250PRO WESTINGHOUSE IGEN2250PRO GENERATOR

WITH BONUS COVER RRP \$69



**\$1299**

GREAT BUY!

**BONUS COVER RRP \$69**



- 1800 Running Watts / 2250 Starting Watts
- 80CC 4 Stroke / 4.7 Lt tank
- Ideal for Jobsite
- VANSafe Caravanning
- RCD Safety Switch – WH&S Approved



## P/N: BKK-11W PROFESSIONAL BUTCHERS KNIFE 11 PIECE SET

WITH BONUS 2 PIECE FILLETING BUTCHER'S KNIFE SET RRP \$69

**BONUS 2 PIECE FILLETING BUTCHER'S KNIFE SET RRP \$69**



Starrett

**\$165<sup>00</sup>**

GREAT BUY!

**GREAT GIFT FOR FATHERS DAY!**



- Blade made from quality stainless steel.
- Double sided sharpening stone and honing steel
- Secure EVA case with carry handle
- NSF certification

## P/N: 915100 ROOFERS BASIC KIT

- Complete Roofers kit incl. bag
- Front & Rear fall arrest points
- Sharp edge rated lanyard
- 140kg rated lanyard



**\$229<sup>00</sup>**

GREAT BUY!

## P/N: 359546 A60TZ SPECIAL CUTTING DISC BUCKET 125MM X 100 DISCS

WITH BONUS UVEX SAFETY SUNGLASSES RRP\$25

**\$219<sup>00</sup>**

GREAT BUY!

**BONUS UVEX SAFETY SUNGLASSES RRP \$25**



- Suitable for cutting steel & stainless steel (INOX)
- High performance cutting off wheel for processing thin-walled sections, pipes and small cross sections.
- Excellent cutting performance and long tool life.



**SUPPORT LOCAL SHOP LOCAL!**



# HAND TOOLS

## Sterling

### 50m x 20mm 3 SPEED WINDER FIBREGLASS TAPE MEASURE

- Metric markings both sides of tape



**\$105<sup>00</sup>**  
INC GST  
XBA5020

### 30m OPEN REEL TAPE MEASURE

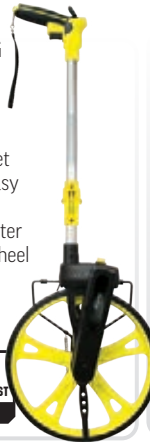
- Strong ABS Casing
- Nylon Coated Steel Blade
- Geared 3x Speed Winder
- Double-Sided Metric Markings



**\$115<sup>00</sup>**  
INC GST  
NR3013

### MEASURING WHEEL

- Records up to 9999M
- 2 counter reset buttons for easy continual use
- 318mm diameter rubber grip wheel



**\$289<sup>00</sup>**  
INC GST  
MW12

### ULTIMAX PRO TAPE MEASURE EASYREAD

- Layered SuperBlade for maximum durability
- Double-sided blade printing



8m  
Metric Magnetic Hook

**\$32<sup>95</sup>**  
INC GST  
TMFXE8027

10m  
Metric **\$39<sup>95</sup>**  
INC GST  
TMFXE1027

## KNIPEX

KNIPEX Quality – Made in Germany

- Four popular combinations
- Australian exclusive

### KNIPEX Power Set

00 31 20 VP53

- High Leverage Combination Pliers 200mm
- High Leverage Diagonal Cutter 200mm



**\$159<sup>00</sup>**  
GREAT VALUE!

### KNIPEX 1000V Electrical Set

00 31 20 VP52

- 1000V Long Nose Cutting Pliers 200mm
- 1000V High Leverage Diagonal Cutter 200mm



**\$199<sup>00</sup>**  
GREAT VALUE!

### KNIPEX Cutting & Gripping Set

00 31 20 VP51

- Long Nose Cutting Pliers 200mm
- High Leverage Diagonal Cutter 200mm



**\$159<sup>00</sup>**  
GREAT VALUE!

### KNIPEX End Nippers Set

00 31 20 VP50

- End Cutting Nippers 200mm
- End Cutting Nippers 280mm



**\$149<sup>00</sup>**  
GREAT VALUE!

## sutton

Superior Since 1917

### CHANNEL LOCK



**Long Nose Pliers**  
• Length: 8" 203mm

**\$105<sup>00</sup>**  
INC GST  
P/N: 317



**Cutting Insulated Pliers**  
• Length: 8" 203mm

**\$99<sup>70</sup>**  
INC GST  
P/N: 3238



**Cable Cutter Plier**  
• Length: 241mm  
• Blade made with custom heat-treated alloy steel.

**\$115<sup>00</sup>**  
INC GST  
P/N: 911



**Linesman Insulated Pliers**  
• Length: 8.5" 216mm  
• Insulated to 1000 Volts these pliers are ideal for electrical tradespeople.

**\$85<sup>45</sup>**  
INC GST  
P/N: 3248



**2PC Griplock® Tongue & Groove Plier Set**  
• 241mm & 318mm  
• GRIPLOCK® jaw accommodates many shapes

**\$104<sup>00</sup>**  
INC GST  
P/N: GLS-1

## KINCROME

### Adjustable Wide Mouth Wrench

- \$25.50** 150mm  
150MM PN: K4316
- \$33.95** 200mm  
200MM PN: K4318
- \$41.95** 250mm  
250MM PN: K4310
- \$72.95** 300mm  
300MM PN: K4312



- > Made from Chrome Vanadium Steel
- > Ultra-wide jaws for a wider working range

**\$39.95**

GREAT BUY!

### Ratcheting Screwdriver 15 Piece

PN: K5683



- > Forward / Reverse & Static Functions
- > Phillips: 1, 2 Blade: 4, 5 Hex: 4, 5, 6
- > Extension bar
- > 1/4" Bit holder - Magnetic

**\$19.95**

GREAT BUY!

### Ultra Low Profile Offset Screwdriver Set 5 Piece

PN: K5643



- > Ultra-Low 3mm Profile
- > 15° Offset Head
- > Compact Keyring Design
- > Constructed of durable S2 alloy steel

**\$59.95**

GREAT BUY!

### Ratcheting T-Handle Set 10 Piece

PN: K5692



- > Phillips: No.2, No.3
- > Blade: 5, 6mm
- > Torx: T20, T25, T30
- > Hex: 5, 6mm

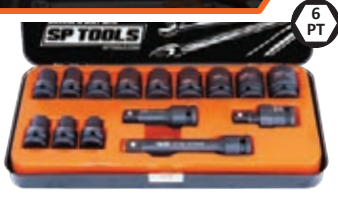
## ARK TARPS

# INDUSTRIAL GRADE TARPS & COVERS



**Engineered to last**  
arktarps.com.au

**BLACK SERIES**



**1/2" DR IMPACT SOCKET SETS**  
 15PC METRIC • 14PC SAE  
 • 10 to 19, 21, 22 & 24mm • 3/8 to 1"  
 • Impact Extension Bars • Impact Extension Bars  
 • Impact Universal Joint • Impact Universal Joint  
 SP20310 SP20315  
**\$129** EACH



**REMOVE ROUNDED BOLTS**  
**12PC 3/8" DR IMPACT TWIST SOCKET SET**  
 SP31260  
**\$199**  
 • Metric: 8, 10 to 19mm  
 • Pin punch for bolt removal  
 • Twisted teeth dig into rounded bolts/lug nuts to provide extreme grip for easy removal.



**44PC 3/8" DR METRIC/SAE/TORX SOCKET SET**  
 SP20200X  
**\$199**  
 • METRIC 12pt - 6 - 22mm  
 • SAE 12pt - 1/4 - 7/8"  
 • E-TORX - E4 - E20  
 • SPARK PLUG - 5/8" & 13/16"  
 • 90T SEALED HEAD RATCHET  
 • FLEX HANDLE - 200mm  
 • EXTENSION BAR - 150mm  
 • UNIVERSAL JOINT



**23PC 1/4" DR METRIC/SAE SOCKET SET**  
 SP20102X  
**\$99**  
 • METRIC 6pt - 4 - 13mm  
 • SAE 6pt - 3/16 - 1/2"  
 • 90T SEALED HEAD RATCHET  
 • FLEX HANDLE - 145mm  
 • EXTENSION BARS - 50 & 150mm

**KINCROME**

**Portable Tool Kit 82 Piece 1/4" & 3/8" Drive**  
 PN: K1847

**\$275.00**  
 GREAT VALUE!



- > 10 1/4" Drive Metric Sockets: 4 - 13mm
- > 3 1/4" Drive Socket Accessories
- > 10 3/8" Drive Metric Sockets: 10 - 19mm
- > 6 3/8" Drive Socket Accessories and more

**Portable Tool Kit 96 Piece 3/8" Drive**  
 PN: K1850

**\$419.00**  
 GREAT VALUE!



- > 15 Metric 3/8" Drive Sockets: 8 - 24mm
- > 11 Imperial 3/8" Drive Sockets: 3/8 - 1"
- > 5 3/8" Drive Socket Accessories
- > 11 Metric Combination Spanners and more

**Portable Tool Kit 116 Piece 1/4" & 3/8" Drive**  
 PN: K1860

**\$440.00**  
 GREAT VALUE!



- > 10 1/4" Drive Metric Sockets: 4 - 13mm
- > 14 3/8" Drive Metric Sockets: 8 - 24mm
- > 10 1/4" Drive Imperial Sockets: 5/32 - 1/2"
- > 13 3/8" Drive Imperial Sockets: 1/4 - 1" and more

**Portable Tool Kit 150 Piece 1/2" Drive**  
 PN: K1870

**\$589.00**  
 GREAT VALUE!



- > 19 Metric 1/2" Drive Sockets: 8 - 32mm
- > 12 Metric 1/2" Drive Deep Sockets: 8 - 24mm
- > 9 1/2" Drive Socket Accessories
- > 14 Metric Combination Spanners and more

**KINCROME**

**Stubby Combination Spanner Set 12 Piece - Metric**  
 PN: K3039

**\$87.95**  
 GREAT BUY!



- > 12 Metric Spanners: 8 - 19mm

**Combination Spanner Set 30 Piece - Metric/Imperial**  
 PN: K3030

**\$330.00**  
 GREAT BUY!



- > 17 Metric Spanners: 6 - 24mm
- > 13 Imperial Spanners: 1/4 - 1"

**Jumbo Combination Spanner Set 7 Piece - Metric**  
 PN: K3035

**\$550.00**  
 GREAT BUY!



- > 7 Metric Spanners: 27 - 50mm
- > Thinner head allowing access to tighter areas
- > Up to 130% stronger than international steel
- > Manufactured from Chrome Vanadium Steel (Cr-V)

**Combination Spanner Set 12 Piece - Metric/Imperial**  
 PN: K3020

**\$145.00**  
 GREAT BUY!



- > 6 Metric Spanners: 7 - 14mm
- > 6 Imperial Spanners: 1/4 - 9/16"

**KINCROME**

**\$59.95**  
 GREAT VALUE!

**Thru-Tang PRY BAR SET 2 Piece**  
 PN: K9114



- > S3 SVCM Alloy Steel
- > Thru-Tang Shaft with Striking End
- > Satin Chrome Finish

**\$89.95**  
 GREAT VALUE!

**Thru-Tang PRY BAR SET 4 Piece**  
 PN: K9116



- > S3 SVCM Alloy Steel
- > Thru-Tang Shaft with Striking End
- > Satin Chrome Finish

**\$17.95**  
 GREAT VALUE!

**High Impact Folding Utility Knife**  
 PN: K6100



- > High Impact
- > Lightweight impact resistant handle
- > Stainless-steel construction
- > Quick-change blade holder mechanism

**\$29.95**  
 GREAT VALUE!

**High Impact Folding Utility Knife Bit Driver**  
 PN: K6125



- > High Impact
- > Lightweight impact resistant handle
- > Stainless-steel construction
- > Quick-change blade holder mechanism with wire stripper

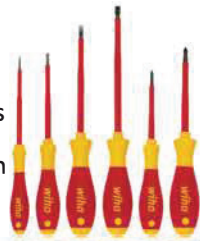


# HAND TOOLS



## 6 PIECE SCREWDRIVER SET VDE 1000V INSULATED

- The highly ergonomically shaped SoftFinish® screwdriver provides a remedy, ensuring optimal transmission of hand force
- For work in the area of live parts up to 1,000 V AC



**\$87.00**  
GREAT VALUE!

WH-00833

## ELECTRIC SCREWDRIVER WITH BIT MAGAZINE

- SlimBits allow access to low-lying screws thanks to inserted insulation
- Safe operation up to 1,000 V AC
- Expandable and compatible with EVF products



PART NO.	PRICE
WH-38612	\$150.00
WH-38613	\$150.00

## 14 PIECE TORQUE SCREWDRIVER SET

- Variably adjustable torque from 0.8 - 5.0 Nm
- SlimBits allow access to low-lying screws thanks to inserted insulation
- Safe operation up to 1,000 V AC



**\$449.00**  
GREAT VALUE!

WH-40674

# HARD WORK.

# MUMME M TOOLS

# MADE EASY.

**GREAT VALUE!**  
**\$99.90**

**Hexagon Fence Bar**  
Tampor & Chisel Ends

- Used to dig holes, break up clay and tree roots
- Optimum size for tamping and packing soil

1800 x 25mm SKU: 5FB180025 **\$99.90**

**GREAT VALUE!**  
**\$103.00**

**Reno Bar**  
1350mm

- Great for DIY jobs and renovation/ demolition work

SKU: 5RENO **\$103.00**

**GREAT VALUE!**  
**\$139.00**

**Hexagon Crowbar**  
Ground & Sharpened Point

- Used for digging holes, breaking up rocks and concrete

1800 x 30mm SKU: 5CB180030 **\$139.00**

**GREAT VALUE!**  
**\$219.00**

**KLEIN TOOLS**  
**Grizzly (Pry) Bar**

- A heavy, strong, multi-purpose tool that saves time and effort on the job

1410mm SKU: A-64306 **\$219.00**

# HARD WORK.

# MUMME M TOOLS

# MADE EASY.

**GREAT VALUE!**  
**\$129.00**

**Normalised Sledge Hammer**  
Hickory Handle

- Specialised soft-steel face (below 20 HRC) engineered to gradually mushroom and safely indicate when replacement is needed

SKU: 5HSNH07 **\$129.00**

**PRICED FROM**  
**\$139.00**

**Sledge Hammers**  
Fibreglass Handle

- A well balanced versatile sledge hammer for building, construction, mining & demolition work

7lb (3.15kg) SKU: 9NH55GFH3.5 **\$139.00**  
10lb (4.5kg) SKU: 9NH55GFH4.5 **\$169.00**  
14lb (6.3kg) SKU: 9NH55GFH6.3 **\$219.00**

**PRICED FROM**  
**\$149.00**

**Wire Rope Punches**  
16 - 32mm

- Used to safely drive out pins and keys

13mm SKU: 7WRP13 **\$149.00**  
16mm SKU: 7WRP16 **\$149.00**  
19mm SKU: 7WRP19 **\$149.00**  
22mm SKU: 7WRP22 **\$149.00**  
25mm SKU: 7WRP25 **\$169.00**  
32mm SKU: 7WRP32 **\$169.00**

**GREAT VALUE!**  
**\$869.00**

**Copper Sledge Hammer**  
Fibreglass Handle

- Suitable for use in non-sparking environments and for applications where risk of chipping needs to be minimised

SKU: 5HCFRH14 **\$869.00**



## Medium Duty Riveter

- PN: GHTJ701
- Sets steel & aluminium rivets up to 4.8 mm (3/16")
  - Sets Stainless Steel Rivets up to 4.0 mm (5/32")
  - Sets 2.4 (3/32"), 3.2 (1/8"), 4.0 (5/32") & 4.8 mm (3/16") rivets



**SETS 4 MM STAINLESS RIVETS!**

**\$59**  
GREAT VALUE!

## Rivet & Nutsert Tool

- PN: GHTJ703A
- Sets steel & aluminium rivets up to 4.8 mm & Nutserts up to M6
  - Sets stainless rivets up to 4.0 mm & Nutserts up to M5
  - Includes a range of M3 to M6 nutserts
- Sets 2.4, 3.2, 4.0 & 4.8 mm Rivets AND M3, M4, M5 & M6 Nutserts



**INCLUDES NUTSERTS!**

**\$139**  
2 IN 1 TOOL!

## Aluminium Nutserts

- Packs of 50

SIZE	PN	PRICE
M4	NM4RNA	<b>\$35</b>
M5	NM5RNA	<b>\$39</b>
M6	NM6RNA	<b>\$46</b>
M8	NM8RNA	<b>\$49</b>
M10	NM10RNA	<b>\$59</b>



# SAFEGUARD

AUSTRALIA'S NUMBER 1 CARGO NET





**LRF 1000m RANGE FINDER**

- Measuring accuracy ± 0.5m
- Vision of field within 1000m - 122m - 7° of field view



**\$349**  
008-LRF1000

**i66R ROTATING LASER LEVEL RED BEAM**

BONUS iMEX Flat Top Aluminium Tripod & 5m Metric staff RRP \$205.70



**\$1,379**  
012-I66R



**Z99R ROTATING LASER LEVEL RED BEAM KIT**

BONUS iMEX Flat Top Aluminium Tripod & 5m Metric staff RRP \$205.70



**\$2,992**  
012-Z99R



**LX22G CROSSLINE LASER GREEN BEAM**

BONUS iMEX Laser Support Pole to 3.2m RRP \$138.60



**\$499**  
012-LX22G



**TOPCON FOR WORK THAT MATTERS**

**Topcon RL-H5A Rotating Laser Dry Battery Standard LS-80X Receiver Bonus Tripod and Staff BUILD\_COMBO\_2\_T**

RRP \$190.30



**\$1,945**  
1021200-45



**Topcon RL-H5B Rotating Laser Dry Battery Standard LS-80X Receiver Bonus Tripod and Staff BUILD\_COMBO\_2\_T**

RRP \$190.30



**\$1,545**  
1021200-71



**Topcon DT-309 Digital Theodolite 2 Year Warranty Inc. Plumb Bob, Tool Kit, Waterproof Cover, Lens Cloth, Case Bonus Flat Aluminium Tripod Heavy Duty 07-10-FH-P**

RRP \$115.50



**\$6,145**  
1034419-08



**ELECTRONIC DIGITAL CALIPER 4IN 100MM**

Slim profile, large LCD display, USB output, locked battery cover plate and function buttons for zero and mm/inch/fractions.

EC799AF-4/100



Comes with EVA case.

**\$119<sup>00</sup>**  
GREAT VALUE!



Comes with EVA case.

**150MM DIGITAL VERNIER + 18C PUNCH**

Slim profile, large LCD display, USB output, reads in mm/ inch/fractions. Plus 18C Automatic Center Punch.

EC799BF-6/150+18C

**\$169<sup>00</sup>**  
GREAT VALUE!

**MAG BASE & DTI COMBO**

10mm range, 0.01mm graduation, 8mm stem, 1-100mm dial reading, 57mm dial face.

3657AA + 3025-481

**\$169<sup>00</sup>**  
GREAT VALUE!



Comes with EVA case.



Comes with EVA case.

**MICROMETER SET 0-100MM**

Micrometer set, 0-100mm, 0.01mm grad, EVA Case.

S3680MXRL

**\$299<sup>00</sup>**  
GREAT VALUE!



Superior Since 1917



**Engineer Squares Graduated**

- Made from stainless steel
- Carbon steel handle
- Precision 90°
- 1mm graduations

Size	Item #	Price Inc. GST
100mm Graduated	267SG1004	<b>\$34.95</b>
150mm Graduated	267SG1006	<b>\$46.95</b>
200mm Graduated	267SG1008	<b>\$57.95</b>



**Engineer Squares**

- Made from stainless steel
- Carbon steel handle
- Precision 90°
- Plain square with no markings

Size	Item #	Price Inc. GST
100mm	267SR1004	<b>\$28.95</b>
150mm	267SR1006	<b>\$45.95</b>
200mm	267SR1008	<b>\$57.95</b>



**INDUSTRIAL GRADE TARPS & COVERS**



**Engineered to last**  
arktarps.com.au

# CHEMICALS

## CRC Evapo-Rust Canister

EVRC | 1L

**NEW**

CRC EVAPO-RUST® Canister is a non-toxic rust remover for fast & effective restoration. The award winning formula is specifically designed to remove rust, with no scrubbing or sanding required. It is safe, simple, and easy to use.



**\$35<sup>95</sup>**

INC GST

## CRC Long Life Anti-Rust Lubricant

3097 | 300g

CRC Long Life provides both superior lubrication and heavy duty corrosion protection for metal parts and assemblies that are stored indoors. Promotes easy start-up of stored equipment.



**\$25<sup>70</sup>**

INC GST

## CRC Soft Seal

3013 | 300g

CRC Soft Seal is a long term indoor/outdoor corrosion inhibitor for machined surfaces and assemblies subjected to long periods of storage or adverse shipping conditions.



**\$24<sup>95</sup>**

INC GST



TOGETHER, WE GET IT DONE.™

[crcindustries.com.au](http://crcindustries.com.au)

## CRC Co Contact Cleaner

2016 | 350g

CRC Co Contact Cleaner is a unique, plastic safe, scientifically formulated, technically proven, stable, inert high purity cleaning solvent. Non-corrosive, non-staining, rapid complete evaporation and contains no lubricants.



**\$24<sup>95</sup>**

INC GST

## CRC 5-56

5005 | 400g

CRC 5-56 is a multi-purpose product with superior penetrating power that breaks through rust and corrosion while it clears away scale and dirt.



**\$12<sup>30</sup>**

INC GST

## CRC Dry Glide

3040 | 150g

CRC Dry Glide is a technically advanced multi-purpose dry film lubricant that cures to a non-staining micro-thin film.



**\$23<sup>65</sup>**

INC GST



TOGETHER, WE GET IT DONE.™

[crcindustries.com.au](http://crcindustries.com.au)

## High Activity Flux Paste, 150g

CT-VFP-150  
**\$22.95**



## VIO-FLUX

- Acid-based gel-like paste
- Activates at room temp
- Exerts a strong, scavenging action
- Removes oxide coatings & other impurities for clean, strong joints

### Compatible with:

- › Stainless Steel › Copper › Nickel
- › Brass › Monel › Inconel
- › High-Chrome & Ferrous Alloys

STARTING AT  
**\$22.95**



## Vio-Flux High Activity Soft Solder Flux

- High strength, inorganic acidic base
- Quick scavenging action
- Promotes adhesion of soft solders
- Removes oxides & other impurities
- Recommended for Sn-Pb & Sn-Zn alloys

### Suitable for:

› Ferrous & Non-Ferrous Metals\*

*\*incompatible with aluminium*

SIZE	PART #	PRICE
1 LITRE	CT-VF-1L	\$22.95
5 LITRE	CT-VF-5L	\$85.00
20 LITRE	CT-VF-20L	\$235.00

## CERAMIC • Silicone-Free Thermally Conductive Grease

- Increases heat transfer by over 50%
- Non-electrical, high thermal conductivity & low thermal resistance
- Non-reactive paste
- Ideal for high powered CPUs & demanding cooling applications

CT-TM000-10PT \$13.95

## SUB-ZERO • Silicone Thermally Conductive Grease

- Non-corrosive silicone base
- High quality thermally conductive fillers
- High performance, excellent conductivity & stability
- Great for computer processors, graphics cards & lighting systems

CT-TM001-10PT \$14.95

## SILVER-FROST • Silver Thermally Conductive Grease

- High concentration of silver particles to improve conductivity
- Suits small voids and uneven surfaces
- Reliable & stable
- For sensitive medical devices & complicated industrial equipment

CT-TM002-10PT \$23.95

## CONDUSIL • Silver Electrically Conductive Grease

- Contains pure silver-based additives - no graphite or mercury
- Reduces resistance & eliminates hot spots caused by poor contact

CT-TM006-10PT \$32.95

## CARBOVOLT • Carbon Conductive Grease

- Metal-free, carbon-based mechanical & thermal conductor
- Reduces arcing hot spots
- Ideal for ground connections & low micro-power electronics

CT-TM007-10PT \$13.95

## THERMALLE™ SPECIALTY GREASES 10ml

PRICED FROM...  
**\$13.95**



CHATOVER

### Drum Spill Pallet

Available in 1, 2, 4 and modular pallets



### IBC Spill Pallet

Available in 1, 2, 4 and modular pallets



**Premium Spill Pallets**  
FOR HARSH OUTDOOR CONDITIONS

**TRUSTED BY TRADIES**



**Spray & Mark Water-Based**

- Low odour, lower toxicity
- Bright colour range for highly visible marks
- Toluene and Xylene free formula
- 360° Valve for any angle application
- Ideal for concrete, bitumen, steel, timber, polystyrene foam and grass

**\$10<sup>50</sup> EACH**  
GREAT VALUE!



- |                   |                          |
|-------------------|--------------------------|
| 40063503 ■ Blue   | 40063526 ■ Fluoro Orange |
| 40063505 ■ Yellow | 40063529 ■ Fluoro Pink   |
| 40063511 □ White  |                          |



**\$12<sup>90</sup> EACH**  
GREAT VALUE!

**Line Marking Paint**

- Fast drying toluene-free formula
- Ideal for marking out car parks, factories, warehouses, sporting fields and courts
- Specially formulated to provide long lasting lines

- |                      |                       |                   |
|----------------------|-----------------------|-------------------|
| 41015011 □ White     | 41015001 ■ Matt Black | 41015004 ■ Green  |
| 41015013 ■ Grey      | 41015002 ■ Red        | 41015005 ■ Yellow |
| 41015014 ■ Dark Grey | 41015003 ■ Blue       | 41015006 ■ Orange |



**\$12<sup>95</sup> EACH**  
GREAT VALUE!

**Turf Master**

- Ideal for landscaping and sporting grounds
  - Quick dry, toluene-free formula
  - Low toxicity formula does not damage grass
- 41125011 □ White

**SOUDABOND 250 SUPER TACK**

167508 - 750ml Click & Spray  
**\$19.95** GREAT VALUE!

158187 - 500ml Aerosol  
**\$16.95** GREAT VALUE!

**NEW**

**SOUDABOND 265 CLASSIC**

167505 - 750ml Click & Spray  
**\$16.95** GREAT VALUE!

**NEW**

**SOUDABOND 280 POWER SPRAY**

167506 - 750ml Click & Spray  
**\$16.95** GREAT VALUE!

146311 - 500ml Aerosol  
**\$15.95** GREAT VALUE!

**NEW**

**SOUDABOND CLICK & SPRAY DISSOLVER & GUN**

167626 - 500ml Dissolver  
**\$9.95** GREAT VALUE!

160411 - Click & Spray Gun  
**\$135.00** GREAT VALUE!

**NEW**

**Rapidstick™**  
HIGHLY LUBRICATING · MEDIUM STRENGTH  
**THREAD SEALANTS**

**50ML TUBES \$21.70**

**8567 · COARSE FITTINGS**

- All metal types, incl, galvanised metals
- High temps up to +204°C
- Viscosity: 540,000 cps
- Contains PTFE
- Colour: White

**8577 · WATER & GAS**

- Certified Class III by AGA
- Methacrylate ester, soft setting
- Gas pressure up to 2,000 kPa
- Water pressure to 10,000 psi
- Contains PTFE
- Colour: Yellow

**SIZE PART #**  
50ml 8567-50      50ml 8577-50

**AGA**

**Rapidstick™**  
OIL TOLERANT · MINOR SURFACE CONTAMINATION  
**THREADLOCKERS**

**8243 · BLUE**

- Suits medium & coarse threads
- For plated parts & stainless steel
- Non-permanent bond
- Fills gaps 6 - 20mm

**8263 · RED**

- Large bolts & studs
- Suits active or passive metals
- Permanent bond
- Fills gaps up to 25mm

**8243 - BLUE \$22.50**

**8263 - RED \$19.50**

**SIZE PART #**  
50ml 8243-50      50ml 8263-50



**MARXMATE**  
PROFESSIONAL MARKING TOOL

**THE PERFECT DRILLING COMPANION**  
FOR ELECTRICAL, PLUMBING, BUILDING AND DIY MARKING JOBS

**\$14.95**

**250+ BURSTS**  
IN EVERY PEN



DRILL IT MARK IT PRESS IT

**ELECTRONIC WELDING HELMETS**

• Suitable for MIG, Stick, TIG, Plasma Cutting, Grinding, Flame Cutting  
• Certified to AS/NZS 1337.1 & 1338.1

**NEW**

**BT WELD**

**ELEMENT**

**\$63.95**  
EA  
P/N: 755010

- ▶ Viewing Area 96 x 44mm / 42cm<sup>2</sup>
- ▶ External Grind & Shade Controls
- ▶ LED Operating Display
- ▶ Optical Class 1 / 1 / 1 / 2 True Colour
- ▶ Shade Range DIN3/4-8/9-13
- ▶ 4 Sensors



**ECLIPSE**

**\$132.00**  
EA  
P/N: 755030

- ▶ Large Viewing Area 112 x 71mm / 80cm<sup>2</sup>
- ▶ Task Light & 180° Panoramic
- ▶ LCD Operating Display
- ▶ Optical Class 1 / 1 / 1 / 1 True Colour
- ▶ Shade Range DIN3/4-8/9-13 (0.5INC)
- ▶ 4 Sensors + 1 Ambient Light Sensor



Task Light Included

**JOKER**

**\$145.00**  
EA  
P/N: 755031



**NITRO**

**\$199.00**  
EA  
P/N: 755040

- ▶ Large Viewing Area 114 x 84mm / 96cm<sup>2</sup>
- ▶ 180° Panoramic & Lift Up For Grinding
- ▶ LCD Operating Display
- ▶ Optical Class 1 / 1 / 1 / 1 True Colour
- ▶ Shade Range DIN3/4-8/9-14 (0.5INC)
- ▶ 4 Sensors + 1 Ambient Light Sensor



**Weldclass**

**PROMAX MG12 MINI MAGNETS**

**2 PACK / 6 PACK**

- 7-Year Warranty\*
- Low profile height 60mm
- Ideal for holding work pieces at multiple points
- Max pull force of approx 12kg\*
- Aluminium clad enclosure for easy cleaning
- Must-have addition to any welder's toolbox



**\$29.95**  
incl GST  
WC-01875

**\$79.95**  
incl GST  
WC-01876

**Weldclass**

**PROMAX MG22 ON/OFF MAGNETS**

- On-off switch allows fast and safe positioning and removal
- Ideal for flat, round and square steel profiles
- Easy to clean, simply turn off and wipe



(110x95x25mm 90/45°)  
(150x130x35mm 90°/45° & 60/30°)

**\$87.95**  
incl GST  
WC-01885

**\$169.00**  
incl GST  
WC-01886

**PURE WELD**

**Premium Red Leather Welders Jacket WJFL**

- Premium cowhide leather with lined shoulders and press stud front closure
- Adjustable cuffs and side
- Pocket on sleeves for pens
- Stitched with Kevlar® thread
- Harness compatible flap on back
- Sizes: M, L, XL, 2XL, 3XL



**\$89.00**  
IN SIZES M-3XL

**Heavy Duty Premium Welding Blanket WB18**

- 1.8m x 1.8m heavy duty cow split leather stitched with Kevlar® thread
- Includes eyelets on outer edges for securing



**GREAT PRICE**  
**\$79.00**

**T-Bar Clamp VWTB04/VWTB05/VWTB06**

- Available in:
- 4 ft - \$109
- 5 ft - \$119
- 6 ft - \$129



**STARTING FROM**  
**\$109.00**

**Super Mig Welding Glove XL GSMIG-XL**

- Cowhide leather stitched with Kevlar® thread



**\$12.95**

**Electrical Grade Leaded Solder Wire, 100g Spool**



**ALL WIDTHS**  
**\$26.95**

- General purpose no-clean mildly activated flux core
- Excellent tarnish & oxide removal
- Results in bright, shiny, solder joints

SIZE	PART #
1.6mm	CT-6016-100
2.3mm	CT-6023-100
3.2mm	CT-6032-100



**Cable Lubricant**

**Non-conductive Temperature Stable Hand Pulling Gel**

- Maximises cable hauling efficiency
- Suits horizontal & vertical piping, ducts & conduits
- Clean, odourless & slow to dry
- Non-toxic & non-staining
- Compatible with most cable jackets
- For electrical, communication & data installation

**STARTING AT**  
**\$16.95**

Made with 99% Pure Ingredients

SIZE	PART #	PRICE
1 LITRE	CT-CPL-1L	\$16.95
5 LITRES	CT-CPL-5L	\$72.95



**35**  
years



**Safety Beneath Your Feet**

advanceantislip.com.au

**NEW**

**BOSSWELD BUDDY ARC 145**

STICK (MMA) PULSE DC TIG (LIFT ARC)

**\$225.00 EA**  
P/N: 60314500NLS

- 140A Output, 10A plug
- Ultra Lightweight & Portable
- Weighs only 2kg
- VRD - Increased Safety

**BONUS CONTAINS**

- 16" black & gold welding gloves
- 6013 GP electrode 2.6mm 50 stk
- 6013 GP electrode 3.2mm 50 stk
- Pro-chip hammer/brush

**BONUS** SRP \$55

**BOSSWELD X3 AC/DC TIG 200X**

TIG AC/DC PULSE HF DC TIG (LIFT ARC) STICK (MMA) AC/DC

**\$1275.00 EA**  
P/N: 602200WP

- 200A Output, 15A plug
- High frequency arc start
- 2T / 4T trigger latching
- Adjustable pulse

**BONUS CONTAINS**

- FX-PRO welding helmet
- TIG welding gloves
- 17 Series TIG torch spares

**BONUS** SRP \$249

**BT WELD FREEDOM 200**

MIG SYNERGIC/MANUAL MIG GAS/GASLESS TIG LIFT DC STICK (MMA)

**\$2299.00 EA**  
P/N: 650200BLINXLE

- 200A Output
- 60% @ 200A duty cycle
- Suits 1kg & 5kg Spools
- Weld Parameter Storage
- Power Factor Correction

**BONUS CONTAINS**

- Megaview welding helmet
- 70S-6 MIG wire 0.9mm 5kg
- Gasless 11 MIG wire 0.9mm 5kg

**BONUS** SRP \$280

**Weldclass FURY 165,185 & 205 MPST VALUE KIT**

7-YEAR WARRANTY OFFER

- 7-Year Warranty\*
- Pulse welding in all modes (MIG, STICK & Lift DC-TIG)
- 165-205A Wattage (Model dependant\*)
- 230-240V 10A Household Supply
- Sold only as a value kit, available in 165, 185 & 205.

**\$699.00** incl GST WFY165MK1

**\$799.00** incl GST WFY185MK1

**\$899.00** incl GST WFY205MK1

**Weldclass PROMAX 680R WITH R50 RESPIRATOR**

7-YEAR WARRANTY OFFER

- 7-Year Warranty\*
- Low profile height 60mm
- Ideal for holding work pieces

**\$899.00** incl GST WC-06700

**PROMAX 850R WITH R50 RESPIRATOR**

- 7-Year Warranty\*
- Auto-darkening and flip up lenses for ease-of-use

**\$1149.00** incl GST WC-06702

**\$298.00 GREAT VALUE!**

**POWERCRAFT 130i**  
Ultimate DIY multi-process 3in1 welder – MIG, Stick and TIG all with a 10amp plug for everyday use. With carry strap. Part Number: K69113-1

**\$1,099.00 GREAT VALUE!**

**POWERCRAFT 195C 3IN1**  
3in1 multi-process welder. 195amp output and 240V/10 amp input. LCD Display. Capable of MIG, Stick, DC TIG welding. New leading 3 year warranty. Part Number: K69114-1

**POWERCRAFT 200M 4IN1**  
Leading 10amp 4in1 multi-process welder. 200amp output and 240V/10 amp input. 3 year warranty. LCD Display. Capable of MIG, HF and Lift TIG AC/DC, TIG pulse AC/DC, TIG Spot, Stick Welding. Ready to Weld accessories. Part Number: K69074-2

**\$2,199.00 GREAT VALUE!**

**POWERCRAFT 200M 4IN1**  
The NEW GENERATION LINCOLN ELECTRIC POWERCRAFT

**TORCHMASTER**  
Australian Welding, Safety and Industrial Supplier

MIG TIG ARC PLASMA GAS PPE

QR Code: torchmaster.com.au

**CHATOYER**

**50L OIL & FUEL VEHICLE SPILL KIT BAG**  
CHOFK01

Portable kit for quick spill

Includes: Absorbents, PPE and disposal bags.

**\$149<sup>00</sup>**  
GREAT VALUE!



**SPILMAX SINGLE IBC SPILL PALLET**

CHPSB01

Captures leaks from IBC storage

Sump Capability: 1300 Litres

Dimension: 1.3mL x 1.3mW x 900mmH

**\$1999<sup>00</sup>**  
GREAT VALUE!



**ULTRA-FILTER PAD**

CHU6540

Compact stormwater filter with 3-litre hydrocarbon capacity

Dimension: 0.75mL x 0.6mW x 75mmH

**\$299<sup>00</sup>**  
GREAT VALUE!



**RICHMOND**  
ROLLING SOLUTIONS

**PLASTIC PARTS BINS**

**2.5L BLUE PLASTIC PARTS STORAGE BIN - 130 X 235 X 125MM**



**\$4.95**  
INC GST  
P/N: RPB20BLUE

**12L RED PLASTIC PARTS STORAGE BIN - 405 X 275 X 165MM**



**\$19.95**  
INC GST  
P/N: RPB40RED

**24L YELLOW PLASTIC PARTS STORAGE BIN - 405 X 455 X 215MM**



**\$24.95**  
INC GST  
P/N: RPB60YELLOW

**PRATT**  
SAFETY SYSTEMS

**WORKSHOP & SITE SAFETY STORAGE - MADE SIMPLE**

**STORE LITHIUM BATTERIES & POWER TOOLS SAFELY**

- CLASS 9 Indoor Storage Cabinet.
- Designed for safe battery storage.
- Helps reduce risk from lithium-ion batteries.
- Ideal for workshops and sites.
- Increasingly used across workplaces.



**AEROSOL STORAGE CAGE**

- Store paints, lubricants and aerosols safely.
- Helps reduce fire and explosion risk.
- Ventilated steel construction.
- Flat-pack for easy delivery.



✓ TRADE-READY ✓ COMPLIANT ✓ BUILT FOR AUSTRALIAN CONDITIONS  
ASK IN-STORE ABOUT THE FULL PRATT SITE SAFETY SOLUTIONS

5516CL9 5517CL9 5535CL9 5530CL9 5545CL9



Miscellaneous Dangerous Goods Storage Cabinet: 30L - 1 Door - 1 Shelf  
Miscellaneous Dangerous Goods Storage Cabinet: 60L - 1 Door - 2 Shelves  
Miscellaneous Dangerous Goods Storage Cabinet: 100L - 2 Doors - 1 Shelf  
Miscellaneous Dangerous Goods Storage Cabinet: 160L - 2 Doors - 2 Shelves  
Miscellaneous Dangerous Goods Storage Cabinet: 250L - 2 Doors - 3 Shelves

**\$1299<sup>00</sup>** INCL GST   **\$1399<sup>00</sup>** INCL GST   **\$1499<sup>00</sup>** INCL GST   **\$2012<sup>00</sup>** INCL GST   **\$2157<sup>00</sup>** INCL GST

PSGC1A-FP PSGC2A-FP PSGC4A-FP PSGC8A-FP PSGC16A-FP



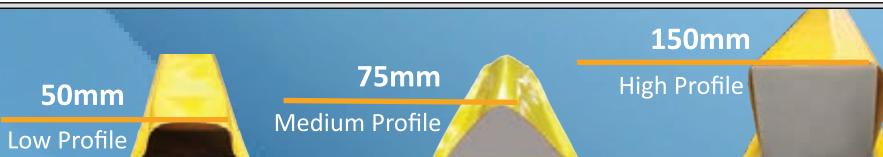
Aerosol Storage Cage. 1 Storage Level Up To 42 Cans. (Comes Flat Packed - Assembly Required)  
Aerosol Storage Cage. 2 Storage Level Up To 84 Cans. (Comes Flat Packed - Assembly Required)  
Aerosol Storage Cage. 2 Storage Levels Up To 200 Cans. (Comes Flat Packed - Assembly Required)  
Aerosol Storage Cage. 4 Storage Levels Up To 400 Cans. (Comes Flat Packed - Assembly Required)  
Aerosol Storage Cage. 4 Storage Levels Up To 800 Cans. (Comes Flat Packed - Assembly Required)

**\$599<sup>00</sup>** INCL GST   **\$899<sup>00</sup>** INCL GST   **\$999<sup>00</sup>** INCL GST   **\$1456<sup>00</sup>** INCL GST   **\$2399<sup>00</sup>** INCL GST

**CHATOYER**

**Flexible Floor Bunding**

CONTAIN SPILLS WITH THE RIGHT PROFILE



there's safe  
& there's **maxisafe**<sup>®</sup>

**R23003.3****Dustlight Personal Dust Monitor**

A portable device that delivers real-time monitoring of respirable dust levels.



CLICK HERE TO  
REQUEST A DEMO

**\$1650**  
INC GST

**HOT BUY!**

**GNN192****Black Knight Nylon Glove with Gripmaster Palm Coating Technology**

Advanced Black Gripmaster<sup>®</sup> coating delivers outstanding grip in wet and oily conditions.

Sizes:

XS-3XL

**\$4.30**  
INC GST

**HOT BUY!**

**GRS235****G-Force Rigger Synthetic Riggers Glove**

Durable synthetic leather palm with reinforced fingertips.

Sizes:

S-2XL

**\$9.95**  
INC GST

**HOT BUY!**

**Phoenix Premium Safety Glasses**

Ultra-light, anti-fog safety glasses with soft contact points.



**\$12.95**  
INC GST

**HOT BUY!**

**EPX373**

Clear Lens

**EPX374**

Smoke Lens

**EPX375**

Indoor/Outdoor Lens

**EPS466****Maxisafe Clear Bifocal Safety Specs**

Various magnification strengths available.

**Magnification Range:**

1.0, 1.5, 2.0, 2.5, 3.0



**\$10.95**  
INC GST

**HOT BUY!**

**EPS476****Maxisafe Smoke Bifocal Safety Specs**

Various magnification strengths available.

**Magnification Range:**

1.0, 1.5, 2.0, 2.5, 3.0



**\$10.95**  
INC GST

**HOT BUY!**

**EUV350-C****MaxiPro Goggle & Visor Combo**

Full-coverage panoramic goggle designed for clear vision, comfort, and added face protection.



**\$35.95**  
INC GST

**HOT BUY!**

**EBF457a****Maxisafe Brow Guard & Face Shield**

Medium-impact face protection with adjustable ratchet headgear & replaceable polycarbonate visor.



**\$26.95**  
INC GST

**HOT BUY!**

**HRE663****Maxisafe Neck Style Earmuff - Class 5 - Yellow**

Class 5 hearing protection delivering 30dB attenuation with all-day comfort and helmet compatibility.



**\$19.95**  
INC GST

**HOT BUY!**

**HRE664****Maxisafe Folding Earmuff - Class 5 - Green**

High-performance Class 5 hearing protection with foldable design and all-day comfort.



**\$26.95**  
INC GST

**HOT BUY!**

**HLU630****COMFORTlite T-Shape Uncorded Earplugs - Class 5 26dB Box of 200 pairs**

Class 5 earplugs offering 26dB attenuation, high visibility, and gentle, low-pressure comfort.



**\$56.95**  
INC GST

**HOT BUY!**

**HLC631****COMFORTlite T-Shape Corded Earplugs - Class 5 26dB Box of 100 pairs**

High-visibility Class 5 earplugs offering 26dB attenuation and low-pressure comfort.



**\$56.95**  
INC GST

**HOT BUY!**

**COT619****Koolguard Laminated disposable coveralls**

Disposable coveralls providing breathable, anti-static protection from particles and light liquid spray.



**\$7.95**  
INC GST

**HOT BUY!**

Sizes:

M-5XL

[maxisafe.com.au](http://maxisafe.com.au)

**WORKARMA**

Focused on Safety



Powered by **BREMICK**<sup>®</sup>

[bremick.com.au](http://bremick.com.au) · [workarma.com.au](http://workarma.com.au)

# GORILLA<sup>®</sup> 21 YEARS



**\$729**  
FPL006-PRO (1.74M)

PLATFORM LADDER

ALSO AVAILABLE:

FPL005-PRO (1.45M) \$629



**\$181**  
PROP-230 (2.3-3.8M)

FORMWORK PROP

ALSO AVAILABLE:

PROP-120 (1.2-1.8M) \$106

PROP-198 (1.98-3.35M) \$139



**\$149**  
BOL-RM-K90 (900MM)

REMOVABLE BOLLARD (KEY LOCK)

PADLOCK VERSION AVAILABLE:

BOL-RM-P90 (900MM) \$149

FIXED BOLLARDS:

BOL-FX-090 (910MM) \$64

BOL-FX-130 (1300MM) \$299

BOL-FX-160 (1600MM) \$199

BOL-FX-170 (1700MM) \$189



**\$99**  
PL-800M2

SAFETY BOOM  
SUITS GORILLA INDUSTRIAL  
PLATFORM LADDERS

**\$74**  
PROP-WSB

WALL SUPPORT  
BRACKET FOR  
FORMWORK PROP



**\$149**  
BOL-FL-060 (610MM)

FOLDING BOLLARD

## RICHMOND ROLLING SOLUTIONS

### SAFETY EQUIPMENT



250KG HEAVY DUTY  
MOULDED SAFETY  
STEP

**\$99.00**  
INC GST  
P/N: SSR005



100KG FOLDING  
PLASTIC STEP  
LADDER - 2 STEP

**\$59.95**  
INC GST  
P/N: FOL001



COMPACT  
ALUMINIUM STEP  
LADDER - 4 STEP

**\$419.00**  
INC GST  
P/N: GSL400

## RICHMOND ROLLING SOLUTIONS

### TROLLEYS AND DOLLIES



920 X 610MM  
FOLDING PLATFORM  
TROLLEY

**\$299.00**  
INC GST  
P/N: FPR001

600 X 450MM  
FURNITURE DOLLIE  
TIMBER DECK



**\$58.95**  
INC GST  
P/N: SKR113



250KG 2 SHELF  
STOCK PICKER  
TROLLEY  
1045 X 425 X  
885MM

**\$259.00**  
INC GST  
P/N: SPR003



**AUSTLIFT®**  
**REVERSE STYLE RATCHET TIE-DOWN SWIFTCORE**

P/C	Size	L.C.	Price (inc.GST)
204257	50mmx9M	2.5T	\$26.95
204258	50mmx11M	2.5T	\$29.95
204259	50mmx13M	2.5T	\$29.95



PRICED FROM...  
**\$24<sup>95</sup>**

Price



PRICED FROM...  
**\$26<sup>95</sup>**

**REVERSE STYLE RATCHET TIE-DOWN SWIFTCORE ERGONOMIC LONG HANDLE**

P/C	Size	L.C.	Price (inc.GST)
204255H	50mmx9M	2.5T	\$24.95
204256H	50mmx11M	2.5T	\$24.95

**RATCHET TIE-DOWN ENDLESS**

P/C	Size	L.C.	Price (inc.GST)
204123	25mmx4M	0.75T	\$7.95
204126	25mmx6M	0.75T	\$9.95
204136	35mmx6M	1.5T	\$12.95
204139	35mmx9M	1.5T	\$14.95
204159	50mmx9M	2.5T	\$19.95



PRICED FROM...  
**\$7<sup>95</sup>**



**RATCHET TIE-DOWN 4 PACK 25mmx4M with S Hook L.C. 0.4T**

P/C 204120

**\$24<sup>95</sup>**  
 GREAT VALUE!

**AUSTLIFT®**



**CTA APPROVED TRAILER SAFETY CHAIN**

P/C	Description	Price (inc.GST)
709408	8mm/1.5M/Galv.	\$14.95
709410	10mm/1.5M/Galv.	\$19.95
709413	13mm/1.5M/Galv.	\$34.95
709308	8mm/50KG/Black	\$309.00
709310	10mm/50KG/Black	\$319.00
709313	13mm/50KG/Black	\$329.00

PRICED FROM...  
**\$14<sup>95</sup>**

P/C	Description	Price (inc.GST)
103506	G80/6mm/Orange	\$29.95
103506B	G80/6mm/Black	\$29.95
103508	G80/8mm/Orange	\$39.95
103508B	G80/8mm/Black	\$39.95
103510	G80/10mm/Orange	\$54.95
103510B	G80/10mm/Black	\$54.95
103606	G100/6mm/Orange	\$39.95
103608	G100/8mm/Black	\$49.95

PRICED FROM...  
**\$29<sup>95</sup>**

**VEHICLE CHAIN SAFETY HOOK SET**

**CHAIN BLOCK MODEL W4**

P/C	Lifting Height	W.L.L.	Price (inc.GST)
110010	3M	1T	\$179.00
110020	3M	2T	\$239.00
110025	3M	3T	\$299.00
110510	6M	1T	\$199.00
110515	6M	1.5T	\$259.00
110525	6M	3T	\$379.00
110530	6M	5T	\$559.00

PRICED FROM...  
**\$179<sup>00</sup>**



**AUSTLIFT®**

**INDUSTRIAL LEVER BLOCK MODEL AL-3**

P/C	Lifting Height	W.L.L.	Price (inc.GST)
121005	1.5M	0.5T	\$169.00
121015	1.5M	1T	\$219.00
121020	1.5M	1.6T	\$229.00

PRICED FROM...  
**\$169<sup>00</sup>**

**AUSTLIFT®**

**CHAIN REGULAR LINK GALV. 25KG PAIL PACK**

**G80 CHAIN CONNECTOR**



P/C	Size	Price (inc.GST)
101806	6mm	\$4.95
101808	7/8mm	\$8.95
101810	10mm	\$9.95
101813	13mm	\$17.95
101816	16mm	\$29.95
101820	18/20mm	\$39.95
101822	22mm	\$69.95
101826	26mm	\$105.00
101832	32mm	\$209.00

PRICED FROM...  
**\$4<sup>95</sup>**

P/C	Chain Dia.	Length	Price (inc.GST)
705205	5mm	48M	\$229.00
705206	6mm	35M	\$189.00
705208	8mm	20M	\$169.00
705210	10mm	12.5M	\$149.00

PRICED FROM...  
**\$149<sup>00</sup>**



CHATOYER

**CHATOYER SILT CURTAIN**

Australian Made. Reliable Quality

- ✓ Made to measure depth
- ✓ Customisable



**CURTAIN CLASSES**





**REINVENTS RECHARGEABLE BATTERIES**



**ALL PACKS INCLUDE:  
BATTERY STORAGE CASE +  
USB-C 4-WAY CHARGING CABLE**

**ZITHION-X AAA  
RECHARGEABLE USB-C  
BATTERY- 4 PACK  
COAZXAAA**

⚡ 0.94Wh Capacity  
AAA Batteries  
⌚ 1.3hr Charge Time  
\*Charging Cable included



**FAST CHARGE  
\$44<sup>95</sup>**

**ZITHION-X AA  
RECHARGEABLE USB-C  
BATTERY- 4 PACK  
COAZXAA**

⚡ 3.0Wh Capacity  
AA Batteries  
⌚ 2.5hr Charge Time  
\*Charging Cable included



**ENERGY DENSE  
\$49<sup>95</sup>**

**ZITHION-X ZX9V  
RECHARGEABLE USB-C  
BATTERY- 2 PACK  
COAZX9V**

⚡ 4.4Wh Capacity  
9V Batteries  
⌚ 3hr Charge Time  
\*Charging Cable included



**LONG LIFE  
\$49<sup>95</sup>**

**ZITHION-X ZXCR123  
RECHARGEABLE USB-C  
BATTERY 2 PACK  
COAZXCR123**

⚡ 2.7Wh Capacity  
CR123 Batteries  
⌚ 2.5hr Charge Time  
\*Charging Cable included



**RELIABLE POWER  
\$49<sup>95</sup>**

**ZITHION-X 16-PORT  
USB-C BATTERY  
CHARGING STATION  
COAZXCS16**

⚡ One charger, compatible with all four battery sizes and charging them at once. Batteries Not Included  
⌚ Standard battery charge time applies



**QUALITY BUY  
\$129<sup>00</sup>**

**LIFETIME WARRANTY**



**CASTORS**

**150MM POLYURETHANE CAST IRON  
CENTRED WHEEL 250KG CAPACITY CASTOR**



RIGID

**\$39.95**  
INC GST  
P/N: R6656



SWIVEL

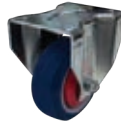
**\$49.95**  
INC GST  
P/N: S6655



SWIVEL WITH BRAKE

**\$68.95**  
INC GST  
P/N: S6655SLB

**100MM REBOUND RUBBER WHEEL 150KG  
CAPACITY CASTOR**



RIGID

**\$25.95**  
INC GST  
P/N: R4605



SWIVEL

**\$29.95**  
INC GST  
P/N: S4604



SWIVEL WITH BRAKE

**\$33.95**  
INC GST  
P/N: S4604B

**75MM POLY NYLON WHEEL 80KG  
CAPACITY CASTOR**



RIGID

**\$15.95**  
INC GST  
P/N: R3311



SWIVEL

**\$20.95**  
INC GST  
P/N: S3310



SWIVEL WITH BRAKE

**\$27.95**  
INC GST  
P/N: S3310B

**ALL STATES  
TRAILER  
SPARES**  
*TUFF STUFF*

**6" Jockey Wheel**

350kg Swivel  
U Bolt Clamp  
Mag Wheel



**\$99<sup>00</sup>**  
#R2112A

**8" Jockey Wheel**

350kg Swivel  
U Bolt Clamp  
Solid Wheel  
Zinc Insert



**\$109<sup>00</sup>**  
#R2124A

**10" Jockey Wheel**

350kg Swivel  
U Bolt Clamp  
Solid Wheel  
Zinc Insert



**\$119<sup>00</sup>**  
#R2114UB

**2 TN Jack Stand**

Side Wind  
Extension Leg  
Tube Mount



**\$199<sup>00</sup>**  
#R2105HB

**Bearing Kits**

Seal, Cap & Split Pin



LM  
**\$22<sup>95</sup>**  
#R1960

SLM  
**\$22<sup>95</sup>**  
#R1961

**Marine Bearing Kits**

Seal, Cap & Split Pin



LM  
**\$23<sup>95</sup>**  
#R1960M

SLM  
**\$23<sup>95</sup>**  
#R1961M

**Electric Coupling**

50mm  
3.5TN  
Dacromet



**\$109<sup>00</sup>**  
#R1818A

CTA#060681

**Chrome Tow Ball**

3.5TN  
50mm



**\$21<sup>95</sup>**  
#R1830



**Engineered To Perform**  
[hi-tecoils.com.au](http://hi-tecoils.com.au)



**Ehoma**  
Clamping Solutions By ITTM®

**RATCHET HANDLE FORGED STEEL CLAMPS**

- The comfortable non-slip handle makes it easier to achieve maximum clamping pressure
- The innovative ratchet system allows faster clamping in restricted working areas



**QUICK ACTION LEVER CLAMPS**

- Ratchet type lever prevents overloading & resists vibration
- For high pressure, fast action clamping purposes



PART NO.	SPAN X DEPTH	RAIL SIZE	CLAMPING FORCE	PRICE
EC-G30R	300 x 140mm	25 x 12mm	670KG	\$99.00
EC-G40R	400 x 175mm	27 x 13mm	700KG	\$129.00
EC-G60R	600 x 175mm	27 x 13mm	700KG	\$145.00

PART NO.	SPAN X DEPTH	RAIL SIZE	CLAMPING FORCE	PRICE
EC-G16L	160 x 80mm	16 x 7.5mm	300KG	\$103.00
EC-G20L	200 x 100mm	19.5 x 9.5mm	350KG	\$119.00
EC-G30L	300 x 140mm	25 x 12mm	500KG	\$219.00
EC-G40L	400 x 120mm	25 x 12mm	550KG	\$162.00
EC-G50L	500 x 120mm	25 x 12mm	550KG	\$199.00

**Abbott & Ashby**

EXCEPTIONAL QUALITY, CRAFTED WITH THE NEEDS OF TRUE PROFESSIONALS IN MIND



**Heavy Duty Bench Vice**

- 3 integrated hardened anvils
- Quick release function
- 360° swivel base for repositioning
- Cast iron strength
- Integrated pipe jaws



**FIRM GRIP**  
\$279.00  
ATBVHD125 - 5"/125MM

**LOCK TIGHT**  
\$355.00  
ATBVHD150 - 6"/150MM

**POWER HOLD**  
\$489.00  
ATBVHD200 - 8"/200MM

**Drill Press Vice**

- Cast iron. Built to last
- Replaceable, hardened steel jaws
- Corrosion-resistant components
- Secure, adjustable mounting

Available in:  
 ATBVQ193A - 3" 75MM Drill Press Vice \$49.95  
 ATBVQ195A - 5" 125MM Drill Press Vice \$69.95  
 ATBVQ196A - 6" 150MM Drill Press Vice \$99.00



**GRIP FORCE**  
\$49.95  
ATBVQ193A - 3"/75MM

**HARD JAWS**  
\$359.00  
ATBVQ150 - 6"/150MM

**Offset Bench Vice**

- Heavy steel build
- Replaceable hardened jaws
- Offset design for tall workpieces
- 4-point bolt-down stability
- Strong, flex-free grip



**Abbott & Ashby 3 Year Warranty**

**Multitool**  
INTERNATIONAL

**BELT AND DISC GRINDING ATTACHMENTS**

- Suits most popular 8" bench grinders
- 178mm (7") Disc Size



PART NO.	BELT SIZE	PRICE
PO362	915 X 50MM	\$239.00
PO364	915 X 100MM	\$555.00

**200MM INDUSTRIAL BENCH GRINDER**

- Powerful 750W induction motor
- NVR safety switch
- Large eye shields for added user safety



PO200HD

**\$369.00**  
GREAT VALUE!

**200MM BENCH GRINDER WITH BELT GRINDING ATTACHMENT**

- Powerful 600W induction motor
- 25mm width grinding wheels
- Cast iron body and base



PO362-200

**\$469.00**  
GREAT VALUE!

**BONUS**  
MITRE TABLE  
VALUED AT  
\$139.00

**Holemaker**  
Drilling Solutions By ITTM®

**PRO42 MAGNETIC BASE DRILL**

- European made
- Large 165mm stroke
- Light-weight, only 12.5kg
- 42mm diameter & 52mm depth capacity



HMPRO42

**\$1999.00**  
GREAT VALUE!

**PRO35 CORDLESS MAGNETIC BASE DRILL**

- European made machine
- 18V Brushless motor technology
- CAS Battery platform
- 35mm diameter & 52mm depth capacity



HMPRO35-18VK1

**\$2799.00**  
GREAT VALUE!

**METAL WORKING FLUIDS**

- Water soluble mix 10:1
- Formulated to extend tool life and improve surface finish



PART NO.	SIZE	PRICE
SPFLUID	500ML	\$24.95
SPFLUID1	1L	\$40.00
SPFLUID5	5L	\$141.00
SPFLUID20	20L	\$442.00

**WORK SHARP**  
SHARPENERS

MAKE **SHARP** HAPPEN.



**FAST / SHARP / WORKS EVERY TIME**

www.itmtools.com.au

# QUALITY & RELIABLE WORKSHOP EQUIPMENT



## L45040PA ALEMLUBE 450L LOCKABLE DIESEL REFUELLING, STORAGE & DISPENSING KIT

- Australian made, heavy duty, robustly constructed polyethylene tank
- Flow rates of up to 50L/min
- Unique user friendly design with lockable lid to aid fuel & dispensing kit security
- Dispensing kit consists of a 12V pump, 4m antistatic fuel delivery hose, 2m battery cables & automatic nozzle
- Built in nozzle holster
- Forklift lift points & tie down capability



**\$1,999<sup>00</sup>**  
GREAT VALUE!

L20040PA as above  
but 200L **\$1,449.00**

**2 YEAR WARRANTY**  
Italian Pumps

**10 YEAR WARRANTY**  
Australian Tanks

## 52000 ALEMLUBE 12V DIESEL REFUELLING TANK KIT WITH MANUAL NOZZLE

- Capable of flow rates of up to 50L/min
- Includes 4m of antistatic fuel delivery hose, 2m of battery cable, a stainless steel & brass fuel filter and a manual nozzle
- Self priming vane pump includes a built-in bypass
- Maximum head capacity of 15m
- Duty cycle of 30 minutes on, 30 minutes off
- Suction capacity of up to 2m



**\$615<sup>00</sup>**  
GREAT VALUE!

## 52004A ALEMLUBE 12V HIGH VOLUME DIESEL DRUM PUMP WITH AUTO SHUT-OFF NOZZLE

- 1" BSP(f) inlet/outlet
- Flow rates of up to 85L/min
- Heavy duty cast iron housing protects the dual motors & the pump head assembly
- Motor protection fuse prevents motor overload
- Telescopic down tube suits fuel tanks up to 1,000mm deep
- Self priming vane pump with sintered steel rotor and acetyl resin vanes
- Pump bypass incorporated into the pump body
- Duty cycle of 30 minutes on / 30 minutes off
- Dry prime of 2m
- Total maximum discharge lift capacity of 10m



**\$1,740<sup>00</sup>**  
GREAT VALUE!

## 5060AN ALEMLUBE HEAVY DUTY HI-FLO REFUELLING DRUM PUMP

- Low torque, high volume easy to use pump delivers up to 110L/min
- Delivery rates of 1.1L per rotation
- Lockable handle minimises the possibility of unauthorised fuel transfer
- New PPR covered handle grip reduces operator fatigue
- New and improved rubber seal above the bung adaptor reduces fuel contamination



**\$529<sup>00</sup>**  
GREAT VALUE!

5080AN as above  
but with filter **\$849.00**

## O30050 EL SERIES 3:1 OIL KIT WITH METER

- Flow rates of up to 10L/min
- Includes a 3:1 ratio oil pump, 1/2" hydraulic hose, electronic oil meter and adjustable 2" bung adaptor
- Smart design with fewer parts
- Suits 205L drums & transfers engine, gear hydraulic oils up to SAE130 and ATF
- Air consumption of 3.6 cfm at 150psi
- Pump noise level of 82 dB
- Double acting pump with a differential air motor ensures smooth & constant oil delivery
- Maximum operating pressure of 450psi (30bar)



**\$999<sup>00</sup>**  
GREAT VALUE!

**1 YEAR WARRANTY**

## O30090 EL SERIES DUAL PEDESTAL OIL HOSE REEL

- Heavy duty dual pedestal construction
- Powder coated with a galvanised base
- Complete with 15m x 1/2" ID S.A.E. 1001R1 wire braid hose
- Adjustable guide arm
- Can be ceiling or floor mounted
- Maximum pressure of 2,320psi (160bar)
- Working temperature of -20°C - +100°C
- 1/2" BSP(f) inlet & 1/2" BSP(m) outlet
- 1-3/8" axle
- Spare parts readily available
- Low cost of ownership



**\$769<sup>00</sup>**  
GREAT VALUE!

**1 YEAR WARRANTY**

## 424170 SAMOA 20KG GREASE KIT WITH CARRY HANDLE

- Supplied complete with 4m of grease hose
- Robust, heavy duty construction for extreme conditions
- 55:1 ratio air motor develops grease pressures of up to 7,950psi (548bar)
- Delivers up to 0.9kg per minute
- 70mm diameter air motor with 35mm stroke
- Handles high density, tacky greases up to NLGI2



**\$1,549<sup>00</sup>**  
GREAT VALUE!

424150 as above  
but with trolley **\$1,549.00**

## 660AN ALEMLUBE 450G TRIGGER ACTION GREASE GUN

- Grease pressures of up to 8,500psi (586bar)
- Delivers up to 1.1g of grease per stroke
- Unique Twin-Lock System seals the piston & eliminates the possibility of dummy lubrication
- Coarse thread on barrel assembly eliminates cross threading during cartridge change over



**\$128<sup>00</sup>**  
GREAT VALUE!

600A as above  
but lever action **\$119.00**

**4 YEAR WARRANTY**

## AD25AT DINGO SERIES AIR OPERATED DIAPHRAGM PUMP

- Flow rates of up to 159L/min
- Air Inlet: 1/2" BSP(f)
- Fluid Inlet / Outlet: 1" BSP(f)
- Maximum operating pressure: 120psi (8bar)
- Maximum delivery per cycle: 570ml
- Maximum suspended solids diameter: 3.2mm
- Maximum dry suction lift: 5.48m
- Body: Aluminium
- Diaphragms & Balls: PTFE (Teflon)
- Sound Level: 78 db(A) at 70psi
- Weight of 9.1kg



**\$1,906<sup>00</sup>**  
GREAT VALUE!

AD20AT as above  
but 3/4" BSP(f) **\$1,308**

## AR1220CAB REWINDA COMPRESSED AIR HOSE REEL - 20M X 12MM BLUE COVER

- Automatic and positive latching mechanism with speed control brake system
- 20m x 12mm ID hose & 0.9m lead in hose
- 1/2" BSPT(m) inlet/outlet connections
- 1/2" BSPT(f) hose reel inlet thread
- Maximum working pressure of 300 psi (20bar)
- Working temperature of -40°C to +80°C
- Weight of 14kg
- Dimensions of 580mm (L) x 480mm (H) x 270mm (W)



**\$422<sup>00</sup>**  
GREAT VALUE!

AR1220CAR as above  
but red **\$422.00**

**10 YEAR WARRANTY**  
Materials & Workmanship

**2 YEAR WARRANTY**  
Wearing Components

## AR615OAR REWINDA OXY ACETYLENE TWIN HOSE REEL - 15M X 6MM ID

- Designed exclusively for using with Oxy Acetylene
- Fully serviceable reel complies with increasing WHS requirements
- 15m x 6mm Twin ID hose & 0.9m lead in hoses
- 5/8" UNF(f) left & 5/8" UNF (f) right connections
- 5/8" UNF(m) hose reel inlet thread
- Maximum working pressure of 300psi (20bar)
- Working temperature of -20°C to +60°C
- Weight of 16kg



**\$698<sup>00</sup>**  
GREAT VALUE!

**10 YEAR WARRANTY**  
Materials & Workmanship

**2 YEAR WARRANTY**  
Wearing Components

## AR615OPR REWINDA OXY PROPANE TWIN HOSE REEL - 15M X 6MM ID

- Designed exclusively for using with Oxy Propane
- Fully serviceable reel complies with increasing WHS requirements
- 15m x 6mm Twin ID hose & 0.9m lead in hoses
- 5/8" UNF(f) left & 5/8" UNF(f) right connections
- 5/8" UNF(m) hose reel inlet thread
- Maximum working pressure of 300psi (20bar)
- Working temperature of -20°C to +60°C
- Weight of 16kg



**\$717<sup>00</sup>**  
GREAT VALUE!

**10 YEAR WARRANTY**  
Materials & Workmanship

**2 YEAR WARRANTY**  
Wearing Components



\* Applies to the vast majority of Alemlube products unless indicated otherwise. Prices are inclusive of GST.



alemlube.com.au

Your Time Creator  
& Energy Saver



11028  
ALEMLUBE  
BATTERY OPERATED  
20L OIL DRUM PUMP



**AUTOSWITCH™  
DUAL PISTON 450G  
GREASE GUN  
K75P-01**

- Effortlessly build pressure up to 12,000 psi single-handed
- Automatic switching from high-flow to high-pressure by detecting line back pressure



**NEW**

**BONUS KY**  
(RRP \$20.22 EA)

**\$184**  
GREAT VALUE!

**10**  
YEARS  
MACNAUGHT  
WARRANTY

**QUICK RELEASE  
GREASE COUPLER  
L-QRC (BSP)  
L-QRC-02 (NPT)**

- Pressures up to 10,000 psi
- Compact Size
- Four Jaw Design



**\$47**  
GREAT VALUE!

**QUICK RELEASE  
GREASE COUPLER -  
LONG NOSE  
L-QRCXL**

- Pressures up to 10,000 psi
- Hardened 4-jaws
- 74mm long / 16mm diameter



**\$69**  
GREAT VALUE!

**12**  
MONTHS  
MACNAUGHT  
WARRANTY

**R3 COMPRESSED  
AIR/WATER REELS**

- Hybrid polymer hose
- UV Stabilised case
- Max working pressure: 250 psi
- Maximum temperature: 60°C
- Durable
- Inlet - 3/8" BSP (F)



**AW320B-01  
3/8" X 20M**

**\$369**  
GREAT VALUE!

**AW420B-01  
1/2" X 20M**

**\$399**  
GREAT VALUE!

**10**  
YEARS  
MACNAUGHT  
WARRANTY

**BOP 60/205L DEF  
STARTER KIT  
BP205S-DUNA**

- Stainless Steel Pump stem, Power Head, 2m Hose and gun assembly, battery pack and charger included in starter kit
- Suitable for DEF/Urea, engine oil, gear oil, hydraulic oil (oils up to SAE140 viscosity)



**\$675**  
GREAT VALUE!

**2**  
YEARS  
MACNAUGHT  
WARRANTY

**BOP 60/205L  
STARTER KIT WITH  
INLINE METER  
BP205S-UNA-IM**

- Pump stem, Power Head, 2m Hose and gun assembly, battery pack, charger and Inline meter included in starter kit
- Suitable for engine oil, gear oil, hydraulic oil (oils up to SAE140 viscosity)



**\$665**  
GREAT VALUE!

**2**  
YEARS  
MACNAUGHT  
WARRANTY

**BOP 20L STARTER  
KIT WITH INLINE  
METER  
BP20S-UNA-IM**

- Pump stem, Power Head, 1.5m Hose and gun assembly, battery pack, charger and inline meter included in starter kit
- Suitable for engine oil, gear oil and Hydraulic oils up to SAE140 viscosity



**\$695**  
GREAT VALUE!

**2**  
YEARS  
MACNAUGHT  
WARRANTY

**HAND OPERATED  
OIL PUMP  
L-DP20J**

- 1.5m of PVC hose with anti-kink springs
- Suitable for mineral oils up to SAE90 viscosity
- 340mm pump length with suction tube extender
- 2 additional adapters supplied



**\$54**  
GREAT VALUE!

**12**  
MONTHS  
MACNAUGHT  
WARRANTY

**PREMIUM 3:1 RATIO  
OIL PUMP WITH HOSE  
AND DIGITAL OIL GUN  
L-ARPD3-KIT5**

- Suitable for oils up to SAE140 viscosity
- Delivery output up to 14 LPM viscosity dependent
- Kit supplied with 3:1 ratio pump with bung adaptor, 3m x 12.5mm delivery hose, Premium Digital oil control gun with Automatic Nozzle and drum bung wrench (Aluminium 2"-3/4")



**\$1199**  
GREAT VALUE!

**2**  
YEARS  
MACNAUGHT  
WARRANTY

**ROTARY VANE  
FUEL PUMP WITH  
HOSE  
L-RPH**

- Delivers up to 20 LPM (250ml per rev)
- Suitable for diesel, kerosene and mineral oils up to SAE90
- 1.8m long delivery hose with delivery nozzle
- Suitable for 60L or 205L containers



**\$175**  
GREAT VALUE!

**12**  
MONTHS  
MACNAUGHT  
WARRANTY

Terms & Conditions: \*Stock Subject to availability. While stocks last. Warranty subject to Macnaught Terms & Conditions. ©Macnaught Pty Ltd, 2026.

[macnaught.com](http://macnaught.com)



**AUSTRALIA'S FIRST  
CHOICE FOR QUALITY  
HOSE, VALVES  
AND FITTINGS**





**COMPACT AIR NEEDLE SCALER**

- Compact & robust design
- Ultra low vibration: 1.5m/s<sup>2</sup>
- Needle Size: 2mm x 100mm
- Stroke Length: 15mm



**\$355.00**  
GREAT VALUE!

M7-SN1350

**1/2" DRIVE AIR IMPACT WRENCH**

- Heavy Duty Twin Hammer
- Lightweight: Only 2.1kg
- Powerful: 1088Nm (800ft-lb) max torque
- Low Noise Level: only 85dB
- 19mm bolt capacity



**\$315.00**  
GREAT VALUE!

M7-NC4299Q

**16MM STROKE HYDRAULIC AIR RIVETER**

- Traction Power: 2303lb.f / 1045kgf
- Stroke Length: 16mm
- Capacity: 2.4-4.8mm
- Air Requirement: 90PSI / 1.48CFM
- Net Weight: 1.5kg



**\$379.00**  
GREAT VALUE!

M7-PA301



**2.2HP BELT DRIVE AIR COMPRESSOR**

- Motor HP: 2.2 HP
- Tank Capacity: 50 L
- Cylinders: V Twin
- Max Pressure: 145 PS
- Free Air Delivery: 185 L/min
- Pump Displacement: 387 L/min



**\$987.00**  
GREAT VALUE!

TM351-22050

**2.5HP BELT DRIVE AIR COMPRESSOR**

- Motor HP: 2.5 HP
- Tank Capacity: 60 L
- Cylinders: V Twin
- Max Pressure: 145 PSI
- Free Air Delivery: 257 L/min
- Pump Displacement: 318 L/min



**\$1143.00**  
GREAT VALUE!

TM351-25060

**3 PHASE, 20HP ROTARY SCREW WITH REFRIGERATED DRYER**

- Motor: 15kW Three Phase 415V
- Tank Capacity: 500 L
- Max Pressure: 147 PSI
- Free Air Delivery: 1980 L/min



**\$15452.00**  
GREAT VALUE!

TM356-20500



**\$2,069**  
00257 BONUS 30M AIR HOSE \$95RRP

- P14 Portable Electric**
- Free Air Delivery: 275LPM @100PSI
  - 2.75HP Single Phase Motor
  - 55L Air Receiver
  - 5 Year Pump Warranty



**\$1,099**  
PB14000 BONUS 30M AIR HOSE \$95RRP

- PB14000 Portable Electric**
- Free Air Delivery: 220LPM @100PSI
  - 3HP 10AMP Electric Motor
  - 50L Air Receiver
  - 1 Year Total Unit Warranty



**\$599**  
PB2000XL

- PB2000 Oil-less Portable Electric**
- Free Air Delivery: 65LPM @100PSI
  - 1HP 10AMP Electric Motor
  - 24L Air Receiver
  - 1 Year Total Unit Warranty



**\$489**  
PB2500

- PB2500 Portable Electric**
- Free Air Delivery: 154LPM @100PSI
  - 2.5HP 10AMP Electric Motor
  - 30L Air Receiver
  - 1 Year Total Unit Warranty

**NEW!**

**5.5HP Variable Speed Full Feature Screw Compressor**

- Free Air Delivery: 500LPM @116PSI
- 5.5HP Variable Speed Three Phase Electric Motor
- 150L Air Receiver & Fitted Refrigeration Dryer
- 1 Year Total Unit Warranty



**\$9,999**  
HQE5.5V5HP-FF

BONUS ELECTRONIC AUTO DRAIN \$320RRP

TRUCKIE'S MATE



**\$2,949**  
00105 BONUS 30M AIR HOSE \$95RRP

- PHP15 Fatboy High Pressure**
- Free Air Delivery: 300LPM @145PSI
  - 3.5HP 15AMP Single Phase Motor
  - 110L Air Receiver
  - 5 Year Pump Warranty



**\$4,999**  
00128-UO BONUS 30M AIR HOSE \$95RRP

- P17 Under/Over Petrol**
- Free Air Delivery: 350LPM @100PSI
  - Honda GX200 Petrol Engine
  - 5L Air Receiver
  - 5 Year Pump Warranty



**COMPRESSED AIR SOLUTIONS. AIR. ANYTIME. ANYWHERE.**

www.itmtools.com.au

**Westinghouse**



**Worksite Inverter Generators**  
RCD safety switch WH&S approved



PURE SINE WAVE

Scan Me to find your Westinghouse model



**iGen2250PRO**  
1800 Running Watts  
2250 Starting Watts  
80cc 4 Stroke / 4.7 Lt Tank  
IP68 15-Amp Outlet  
VANSafe Caravanning

**\$1299**  
RV-WORK



**iGen3750PRO**  
3000 Running Watts  
3750 Starting Watts  
141cc 4 Stroke / 6.3 Lt Tank  
IP68 15-Amp Outlet  
VANSafe Caravanning

**\$2299**  
RV-WORK



**iGen4750PRO**  
3800 Running Watts  
4750 Starting Watts  
190cc 4 Stroke / 12 Lt Tank  
IP68 15-Amp Outlet  
Ideal for Jobsite

**\$2999**  
PROFESSIONAL



**iGen7500PRO**  
8000 Running Watts  
7500 Starting Watts  
298cc 4 Stroke / 15 Lt Tank  
IP68 15-Amp & 32-Amp Outlets  
Ideal for Construction, Hire and Events

**\$3999**  
PROFESSIONAL



**BONUS COVER**  
RRP \$69



**BONUS COVER**  
RRP \$69



**BONUS COVER**  
RRP \$99



**BONUS**  
Free Large Dust Cover (\$72 value) with DGUH7S-2 8 kVA purchase!

**DUNLITE Generators**

POWERED BY **HONDA**

**8 kVA Petrol Generator**  
DGUH7S-2

- Honda® Australia GX390
- Popular for emergency house backup
- Wheel kit available
- Built in Australia

- Applications:**
- Building/Construction
  - Emergency
  - Farming



**STABLE POWER**  
**\$2,639**

**W&C WELLING & CROSSLEY**



**SILENT INVERTER GENERATOR**

MODEL	RATED AC OUTPUT	FUEL TANK	CONNECTIONS	VOLTAGE	WEIGHT
WC-P3200Si	3,000W	6L	2 x IP44 15A	240V AC	23KG

Compact yet powerful, your grab-and-go power solution for outdoor use and essential home backup.



**QUIET OPERATION**  
**\$1,299**  
WC-P3200Si - 3,200W

**OPEN FRAME PETROL GENERATORS**

MODEL	RATED AC OUTPUT	FUEL TANK	CONNECTIONS	VOLTAGE	WEIGHT
WC-P3750	2,800W	15L	2 x IP44 15A	240V AC	45KG
WC-P8750	6,500W	25L	2 x IP66 15A	240V AC	90KG

DIY workshops (small to large): tools & lighting  
Home backup: essential appliances  
Outdoor events: lights & sound systems  
Mobile businesses & stalls: power appliances

**RUGGED BUILD**  
**\$1,199**  
WC-P3750 - 3,200W

**BACKUP READY**  
**\$1,899**  
WC-P8750 - 7,000W

**LAVOR SIMPLY STRONGER**



**\$847.00**  
GREAT VALUE!

**IRH-70 INDUSTRIAL RADIANT HEATER**

- Radiant diesel heater
- 20.5KW, 70,000 BTU
- Heating area capacity 165sqm (approx.)
- Fuel tank capacity 14lt
- Diesel consumption 1.9 lt./h
- Up to 6 hrs capacity
- PN: 8.700.0010

**IRH-70 TROLLEY WHEELKIT**  
PN: IRH70-WK **\$99.00**  
GREAT VALUE!



**\$1,990.00**  
GREAT VALUE!

**IRH-125 INDUSTRIAL RADIANT HEATER**

- Radiant diesel heater
- 36.6KW, 125,000 BTU
- Heating area capacity 290 m2/h (approx.)
- Fuel tank capacity 40lt
- Diesel consumption 3.4 lt./h
- Up to 12 hrs capacity
- PN: 8.700.0011

**IFH-175 INDUSTRIAL FAN FORCE HEATER**

**\$869.00**  
GREAT VALUE!

- Fanforced diesel heater
- 175,000 BTU (51.3KW)
- Heating area 400sqm
- Diesel consumption 5 lt./h
- Up to 10 hrs capac.)
- Fuel tank 50 litres
- PN: 8.700.0012



**\$899.00**  
GREAT VALUE!

**14" surface cleaner**  
RRP\$99

**THERMIC 7**

- Max. Pump Pressure 3000PSI
- Flowrate 11.5LPM Max
- Loncin 7HP petrol motor (2 Year Warranty)
- Lavor Industrial crankshaft pump
- PN: 36066-00056



**LPS-950 MANUAL SWEEPER**

- 950 mm Cleaning width, including side brushes
- 480 mm centre main brush width
- 600 M2/hour working efficiency
- Weight 25 kgs
- 55 litre collection bin
- PN:39001-00029

**\$759.00**  
GREAT VALUE!



**\$399.00**  
GREAT VALUE!

**STARGATE 180**

- Max. Pump Pressure 2175PSI
- Flowrate 8.5LPM
- Brush motor 2300W
- 6 mt. nylon reinforced HP hose
- PN:36058-00085



**\$999.00**  
GREAT VALUE!

**RRP\$89**  
Foam bottle

**MAINE 1409XP**

- Max. Pump Pressure 2610 PSI
- Flowrate 9LPM
- 2400w (1Ph) Motor (10amp)
- Lavor Brass pump head
- 10-METER STEEL BRAID HP HOSE
- Total Auto Start-Stop
- PN: 36091-00012

**Beat the Heat**

**AAPKA30**  
ALEMLUBE  
AUTOMOTIVE PREMIUM  
MOBILE EVAPORATIVE  
AIR COOLER 1,100W



**AAPKA24**  
ALEMLUBE  
AUTOMOTIVE PREMIUM  
MOBILE EVAPORATIVE  
AIR COOLER 440W



# CUTTING, ABRASIVES & TAPES



15 discs



**SMT624 Zirconia flap disc bucket**  
125mm disc in 3 grits x 5 of each.  
Contains 40#, 60# & 80# discs.  
Aggressive stock removal rate and comfortable grinding behaviour on steel and stainless steel.



**\$91<sup>00</sup>**  
P/N: 726494



**\$42<sup>95</sup>**  
PRICED FROM...

125mm - **322631** - \$42.95  
230mm - **322634** - \$89.00

**DT600U SUPRA Segmented blade**  
Suitable for various applications.  
First-rate cutting performance.  
Exceptional service life.



**\$29<sup>95</sup>**  
PRICED FROM...

115mm x M14 - Steel - **358328** - \$29.95  
115mm x M14 - Inox - **358330** - \$49.95

**BK600Z Bevel brush with knotted wire**  
Excellent for cleaning larger surfaces.  
Removal of scale, rust, paint and slag.  
High brushing capacity.



100 discs



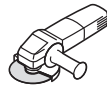
Bonus pair of **UVEX** safety sunglasses!

**BONUS!**

**A60TZ SPECIAL Cutting disc - 125mm**  
Excellent cutting performance and long tool life. Suitable for cutting steel & stainless steel (inox).

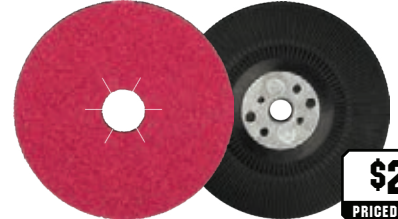


**\$219<sup>00</sup>**  
P/N: 359546



**\$3<sup>95</sup>**  
P/N: 328782

**A24 EXTRA Grinding disc - 125mm**  
Standard disc with excellent price performance ratio. For universal use in metalworking. Excellent results on all standard angle grinders



**\$2<sup>95</sup>**  
PRICED FROM...

**FS964 Ceramic fibre disc - 125mm**

24# - 330484 - \$3.95  
36# - 330485 - \$3.95  
60# - 330487 - \$2.95  
80# - 330490 - \$2.95  
120# - 330491 - \$2.95

**ST358A Backing pad**  
**\$19<sup>95</sup>**  
P/N: 126347



## FLEXOVIT Megaline Cut-Off Wheel



LASTS 20%+ LONGER

**\$59<sup>00</sup>**  
TUB  
GREAT VALUE!

66253371090 125x1.0x22.23mm - 25 pack tub  
• Coarse aluminium grain provides fast material removal rate  
\*When compared to Flexovit 66252919991

## FLEXOVIT Diamond Blade 3 Pack



FAST CUT

**\$69<sup>95</sup>**  
PACK  
GREAT VALUE!

70184601733 125 x 10/2 x 22.23mm Triple Pack  
• Continuous, Turbo & segmented blades in one pack  
• For concrete, masonry, natural stone, tile and ceramic

## BEAR PVC Duct Tape



CONFORMS EASILY

**\$5<sup>40</sup>**  
EACH  
GREAT VALUE!

63642548313 48mm x 30 metres - Grey  
63642583589 48mm x 30 metres - Black  
• Made from 0.16mm thickness PVC tape to provide excellent stretch, conformability and durability

## NORTON Metal Cloth Handy Rolls



CONFORMABLE

**\$69<sup>00</sup>**  
GREAT BUY!

50mm x 50 metres  
• In Grits P40 - P320  
• Convenient dispenser  
• DIY or workshop



## NORTON BLAZE Rapid Strip Disc



LONG LIFE

**\$40<sup>95</sup>**  
EACH  
GREAT VALUE!

66623303916 125 x 22mm Depressed Centre  
• Heavy coating of Norton SG Blaze ceramic alumina grain  
• Does not shed on rust-encrusted pieces or load on soft materials

## CLIPPER TT180BM 230V Tile Saw



WITH CARRY CASE

**\$249<sup>00</sup>**  
EACH  
GREAT VALUE!

70184625699 230V-550W Motor  
• Maximum cutting depth 12mm at 90 degrees  
• Light weight tilting table & Removable drip tray  
• Machine supplied with diamond blade

## BEAR Grizzly Gaffer Tape



2X STRONGER

**\$11<sup>95</sup>**  
EACH  
GREAT VALUE!

63642548203 50mm x 18m - Black  
63642548237 50mm x 18m - Silver  
• Ultra Tough Gaffer Tape  
• Sticks like ... No Other

## FLEXOVIT Multi Material Cut Off Wheel



CUTS ALL

**\$39<sup>95</sup>**  
TIN  
GREAT VALUE!

66252845963 125 x 1.0 x 22.23mm - 10 Pack Tin  
• Ideal for cutting stainless steel, metal, aluminium, copper, non ferrous metals, masonry, concrete, tiles, pvc, rubber & timber



# GEAR UP FOR BIG SAVINGS!



**350mm (14") General Purpose CHOP SAW WHEEL**

- Suits Steel & INOX (Stainless Steel)
- Thickness - 2.8mm

**\$6<sup>95</sup>**  
73001321



**125mm (5") x 1.0mm General Purpose Ultra Thin Cut-Off Wheels Tradie Pack - 10pk**

- Suits mild steel & stainless steel (INOX)
- Resealable hang pack
- Suits cordless angle grinders
- Free of iron, sulphur & chlorine



**\$27<sup>95</sup>**  
69902634

**125mm (5") POLIFAN STRONG STEEL Flap Discs**



- Consistent highly-abrasive quality right up to the last grain
- Outstanding stock removal on steel
- Long tool life



A/N	Grit	Price
67788025	36	\$28.95
67788125	50	\$28.95

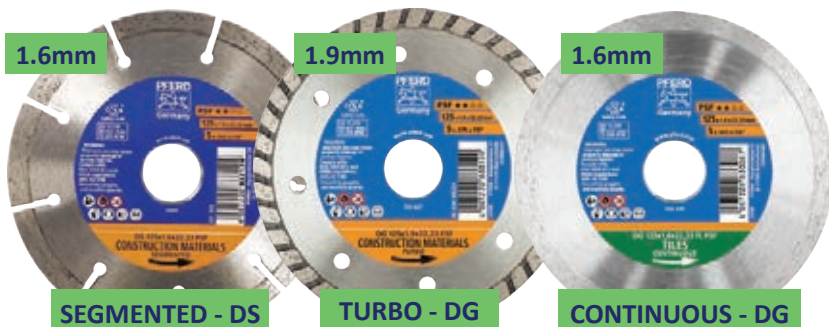
**125mm (5") POLICLEAN PRO Clean & Strip Disc**

- Suits face-down grinding
- High flexibility and no clogging
- Can be used on most materials
- For coarse cleaning



A/N	Size (mm)	Price
47803249	125	\$19.95
47803250	180	\$36.95

**125mm (5") General Purpose Diamond Cut-Off Wheels**



- SEGMENTED - DS**
- Suits Concrete (medium-hard, reinforced, hard), brick, soft clinker brick, & sand-lime brick

**\$19<sup>95</sup>**  
68300045

- TURBO - DG**
- Suits Sandstone, clay brick, slate, granite and marble

**\$19<sup>95</sup>**  
68300043

- CONTINUOUS - DG**
- Suits glazed tiles, ceramic tiles, porcelain stoneware, slate & marble

**\$16<sup>95</sup>**  
68300041

**125mm (5") Double Row Diamond Cup Wheel**

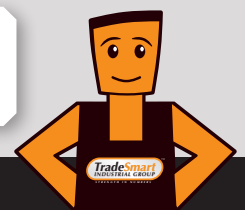
- Suitable for dry & wet grinding
- Suits concrete, stone, masonry and tile surfaces
- Double row provides smoother finish
- Fits most standard angle grinders



**\$89<sup>95</sup>**  
68300068



**TRUSTED TOOLS, PROVEN IN ACTION!**



# DRILLING



### STEP TIP DRILL & ACCESSORY SET CONTAINS

14 STEP TIP 1/4" HEX SHANK DRILLS AND FIVE 50MM IMPACT MAGNETIC POWER BITS.

Bordo Cobalt Step Tip drills deliver super-fast drilling in metals and timber. Impact rated, they are suitable for use in cordless drills and impact drivers.

**\$189<sup>00</sup>**  
2012-S1



**3 PIECE STEP TIP HSS-Co5 (COBALT) STEP DRILL SET TAIN COATED. EXTREME PERFORMANCE AND TOOL LIFE IN HARD MATERIALS.**

- 4-12 x 1.0mm
- 9-19 x 2.0mm
- 8-20 x 2.0mm

**\$299<sup>00</sup>**  
2612-S1

### SABER X-SET HSS-Co5 (COBALT) METRIC TWIST DRILL SET WITH BONUS 16MM HSS-Co5 TIN COATED COUNTERSINK

Saber 25 Piece HSS-Co5 (Cobalt) Twist Drill Set 1.0-13.0mm x 0.5mm rises. Cobalt HSS Twist drills are extremely hard and provide superior performance and increased tool life especially in stainless steel and high tensile steel.



**\$160<sup>00</sup>**  
8012-XM3



**\$99<sup>00</sup>**  
9905-S1

**BOLT EXTRACTOR SET 9 PIECE 8-19MM.**



**\$57<sup>00</sup>**  
9900-SM1



**\$74<sup>95</sup>**  
9900-SM2



**\$55<sup>50</sup>**  
9904-S1



**\$54<sup>95</sup>**  
9901-S1



**\$35<sup>50</sup>**  
2005-S1



### 5 PIECE 1/4" HEX MULTIDRILL MULTI-MATERIAL DRILL BIT SET

- Sharpened tungsten tip for superior performance across a range of materials



**\$64<sup>95</sup>** INC GST  
UNIHEXSETS

### QUICK RELEASE BIT HOLDERS AND CARABINER

- 5x quick change bit holders and 1x carabiner included



**\$24<sup>95</sup>** INC GST  
CBH05

### ADAPTOR SET 1/4" TO 1/4" - 3/8" - 1/2" | 3 PACK

- Perfect for metal to metal fastening when extreme tightening down is required



**\$15<sup>95</sup>** INC GST  
CADP-SETSM

### IMPACT POWER BITS CARDED | 5 PACK

PH2 x 50mm 5 Pack

**\$14<sup>95</sup>** INC GST  
CPH250SM-5

PH2 x 75mm 5 Pack

**\$17<sup>95</sup>** INC GST  
CPH275SM-5

PH2 x 100mm 5 Pack

**\$21<sup>50</sup>** INC GST  
CPH2100SM-5

PH2 x 150mm 5 Pack

**\$29<sup>95</sup>** INC GST  
CPH2150SM-5

### THUNDER MAX

- Superior magnetism helps the bit grip the screw and prevent cam-out



### THUNDER MAX

### 33 PIECE IMPACT DRIVER BIT SET WITH MAGNETIC BOOSTER

- Black oxide finish for extreme corrosion resistance
- Maximum strength for high impact & extreme torque loads



**\$79<sup>95</sup>** INC GST  
TMDSET-33

### IMPACT MAGNETIC NUTSETTER CARDED

- Maximum strength for high impact & extreme torque loads



3/8" x 65mm  
**\$8<sup>95</sup>** INC GST  
CNS3865SM

5/16" x 65mm  
**\$7<sup>95</sup>** INC GST  
CNS51655SM



### PH2 x 65mm IMPACT DOUBLE ENDED BITS CARDED

- The torsion zone provides maximum strength for high impact & extreme torque loads

3 PACK  
**\$14<sup>95</sup>** INC GST  
CPH265DSM-3

5 PACK  
**\$18<sup>50</sup>** INC GST  
CPH265DSM-5



# GRUB SCREWS

METRIC AND IMPERIAL

STEEL AND STAINLESS STEEL



**14 SIZES**

**sutton**

Superior Since 1917

**XP BULLET**



**25pc XP Bullet Metric Drill Set**

- 1.0 – 13.0mm x 0.5mm
- Extreme Parabolic Flute for drilling ferrous & non-ferrous metals, wood & plastic.

**\$1990**  
INC GST  
P/N: D220 SM25

**COBALT**



**25pc Heavy Duty Cobalt Drill Set**

- Industrial quality for drilling materials with high hardness & tensile strength such as cast iron, bronze, hard steel & stainless steel.
- 1.0 – 13.0mm x 0.5mm

**\$5250**  
INC GST  
P/N: D109 SM3

**INOX**



**25PC INOX Metric Drill Set**

- Industrial quality for superior performance in stainless steel
- 1.0-13.0mm x 0.5mm rises

**\$3150**  
INC GST  
P/N: D180SM3

**sutton**

Superior Since 1917

**SUPATOR**



**37PC Impact Driver Bit Set & Supabit Plus Drill Set**

- Driver Bits: 25/50/100mm PH, PZ, SQ, HX, TX, Nutsetter, Socket Adaptor
- 8PC Supabit Plus Drills: 2.0-5.0mm

**\$6900**  
INC GST  
P/N: S251S37A

**SUPATOR**



**9PC Impact Socket Set**

- Sockets: 10, 13, 15, 16, 17, 18, 19, 24mm
- Socket Adaptor Drive: 1/4" Hex - 1/2"

**\$990**  
INC GST  
P/N: S252S09A



**3pc HSS Step Drill Set**

- 4-12mm (9 steps), 4-20mm (9 steps), 4-30mm (13 steps)
- For use in sheet metal, aluminium, plastic & fibre glass, ideal for sheet metal without pre-drilling.

**\$2390**  
INC GST  
P/N: D504SET3

**sutton**

Superior Since 1917

**FN**



**25pc HSS-Cobalt Drill Set + BONUS Countersink**

- Drills: 2, 2.5, 3 x 2, 3.2, 3.5, 4 x 2, 4.2, 4.5, 5 x 2, 5.5, 6, 6.5, 6.8, 7, 7.5, 8, 8.5, 9, 10, 11, 12, 13mm
- BONUS Countersink: 16.5mm

**\$17100**  
INC GST  
P/N: 149060006

**FN**

**WORKSHOP**



**Auto Centre Punch**

- Made from brass
- Spring loaded, no hammer required
- Typically used as an aid to drilling operations

**\$2695**  
INC GST  
P/N: 267AP1125



**Engineer's Scriber**

- 270mm Double Ended, 90° Bend Point
- Used in metalworking to mark lines on the workpiece.
- Available with bend, hook or TCT points for marking out in confined spaces such as grooves and keyways

**\$1295**  
INC GST  
P/N: 267MO6020

**sutton**

Superior Since 1917



**14pc Straight Flute HSS Tap & Drill Metric Set**

- Range: M3, M4, M5, M6, M8, M10, M12 + tapping drills 2.5, 3.3, 4.2, 5.0, 6.8, 8.5, 10.2mm

**\$22500**  
INC GST  
P/N: T3850014

**FN**

**40pc Tap & Die Set**

- Available in both metric and imperial configurations.
- Set includes T & bar type tap wrenches, button die holder and bonus screw pitch gauge.



**\$9900**  
INC GST  
P/N: 166044650

**Metric**

- M2 x 0.4, M2.5 x 0.45, M3 x 0.5, M3.5 x 0.6, M4 x 0.7, M4.5 x 0.75, M5 x 0.8, M6 x 1.0, M7 x 0.75, M7 x 1.0, M8 x 1.0, M8 x 1.25, M10 x 1.25, M10 x 1.5, M12 x 1.5, M12 x 1.75, 1/8 BSPT 28



**\$8900**  
INC GST  
P/N: 166044651

**UNC/UNF**

- UNC: 4 - 40, 6 - 32, 8 - 32, 10 - 24, 12 - 24, 1/4 - 20, 5/16 - 18, 3/8 - 16, 7/16 - 14, 1/2 - 13
- UNF: 10 - 32, 1/4 - 28, 5/16 - 24, 3/8 - 24, 7/16 - 20, 1/2 - 20, 1/8 - 27

**HOT DEALS STOREWIDE!**

FREIGHT CHARGES MAY APPLY. VISIT TRADESMART.NET.AU FOR FULL TERMS AND CONDITIONS



# metabo

The power to meet your standards

**240V 2300W Metal Cut-off Saw 355mm**  
601786190  
CS 22-355

- Grinding wheels (Ø x bore): 355 x 25.4mm
- No-load speed: 3700 rpm
- Max. cutting capacity: round tube 132 mm L-profile 150 x 150mm square tube 120 x 120 mm rectangular tube 100 x 208 mm
- Spindle Lock & Quick Clamping
- Variable Mitre 15° to 45°
- Cutting Depth Limiter
- Includes 1 x Cutting Disc



**\$449**  
POWERFUL!

**240V 2400W Angle Grinder**  
606467190  
W 24-230 MVT

- Disc-Ø 230 mm
- Marathon motor – 6600 rpm
- Tool-free adjustable guard; twist-proof
- Metabo VibraTech (MVT)
- Metabo safety switch, deadman's switch
- Cable length: 4 m



**\$359**  
2400 WATT!

**18V 2-Piece Kit**  
AU68205450  
MET18MX2SB2HD5.5FA

- 800 Nm Brushless Impact Wrench **SSW 18 LTX 800 BL**
- Grease Gun **FP 18 LTX** (450 g)
- 2 x 5.5 Ah LiHD Battery Packs
- ASC 145 Duo Air-Cooled Fast Charger
- Heavy Duty Tool Bag



**\$1249**  
AWESOME VALUE!

**18V Brushless Hammer Drill/Impact Driver Kit**  
AU68200955  
MET18BL2MB2HD5.5AF

- 130 Nm Hammer Drill **SB 18 LTX BL I**
- 200 Nm 1/4" Impact Driver **SSD 18 LTX 200 BL**
- 2 x 5.5 Ah LiHD Battery Packs
- ASC 55 Air-Cooled Charger
- metaBOX Case



**\$749**  
GREAT VALUE KIT!

**36V (2x18V) L-Class Wet/Dry Vacuum Cleaner Kit 30L**  
AU60207300  
AS 36-18 L 30 PC-CC 5.5 DUO K

- 30 Litre L-Class wet & dry vacuum cleaner with CordlessControl
- **AS 36-18 L 30 PC-CC**
- 2 x 5.5 Ah LiHD Battery Packs
- ASC 145 DUO Air-cooled Fast Charger



**CORDLESS CONTROL**  
99% filter efficiency

**Li HD**

**BONUS ONLINE REDEMPTION OFFER**

Buy any Metabo 2 piece or 3 piece cordless tool kit  
**REDEEM**  
1 x 5.5Ah **Li HD** Battery Pack



Redeem online via:  
[www.metabo.com/redemptions](http://www.metabo.com/redemptions)

# HIKOKI

MAKE. MOVE. GO

**1320W 125MM ANGLE GRINDER WITH PADDLE (DEADMAN) SWITCH**  
G13BYEQ2H1Z



- Paddle (Deadman) Switch
- Anti-Vibration Handle
- Detachable filter
- 3 position side handle mounts
- Toolless wheel guard
- Safety Brake, Kick Back Protection, Soft Start, Restart Protection, Overload Protection, Rotation recovery control function & Overheat protection

**\$519**  
PADDLE SWITCH

**1150W 40mm SDS Max Brushless Rotary Hammer**  
DH40MEY2H1Z



- 9.2J
- Concrete - drill bit 40mm capacity
- Concrete - core bit 105mm capacity
- 2 Mode SDS-MAX
- UVP (User Vibration Protection)
- RFC (Reactive Force Control), which detects tool overload & halts rotation
- 4-stage electronic speed switch
- 6.5kg without side handle

**\$1189**  
POWERFUL!

**MULTIVOLT 18V/36V LI-ION SLIDE BATTERY T-PWR (TABLESS)**  
BSL3640MVT (381990)

**2160W** MAX OUTPUT  
**8.0AH (18V)** 4.0AH (36V)  
**21700** HIGH OUTPUT TABLESS CELLS



**NEW**  
**\$299**  
TABLESS TECH!

**36V Brushless Rebar Cutter & Bender Kit**  
VB3616DAHGZ



- 1 x **VB3616DA** 36V Brushless Rebar Cutter & Bender 16mm Max Cut & Bend, reverse Rotation
- 2 x **BSL36A18X** 18V 5.0Ah / 36V 2.5Ah MultiVolt Battery
- 1 x **UC18YSL3** 18V Rapid Charger with USB port

**\$4299**  
AWESOME VALUE!

**36V Brushless 19mm (3/4") Impact Wrench Kit**  
WR36DFHRZ (AU48000022)



- 1 x **WR36DF** 19mm (3/4") High Torque Impact Wrench
- 2 x **BSL36A18X** MultiVolt 18V/36V (5.0/2.5 Ah) Li-ion Slide Battery A
- 1 x **UC18YSL3** Rapid Charger with cooling & USB Port
- 1 x Stackable Carry Case III

**\$899**  
GREAT VALUE!



# ESSENTIAL GEAR FOR EVERY JOB



**\$499**  
GREAT VALUE!  
TOOL ONLY



**XGT**  
PB003GZ  
40V MAX BRUSHLESS  
COMPACT BAND SAW

**NEW**

**\$999**  
GREAT VALUE!  
TOOL ONLY



**LXT**  
DBN640ZK  
18V BRUSHLESS  
METAL CONNECTOR NAILER

**NEW**

**\$199**  
GREAT VALUE!  
NEW



850W  
GA5100  
125mm (5")  
ANGLE GRINDER

**2 YEAR WARRANTY**

**\$439**  
GREAT VALUE!  
TOOL ONLY



**LXT**  
DGA504Z  
18V BRUSHLESS 125mm  
SLIDE SWITCH ANGLE GRINDER

**\$299**  
GREAT VALUE!  
TOOL ONLY



**LXT**  
DTM53Z  
18V BRUSHLESS MULTI-TOOL

**NEW**

**BONUS**  
E-19277  
IMPACT XPS  
24 PC POWER BIT SET



**LXT**  
DTD173RTJ  
18V BRUSHLESS  
4-STAGE IMPACT DRIVER

**\$699**  
GREAT VALUE!

**\$929**  
GREAT VALUE!



**LXT**  
DTW1001RTJ  
18V BRUSHLESS  
3/4" IMPACT WRENCH KIT

**BONUS**  
E-16645  
IMPACT SOCKET SET



**LXT**  
DLX2419T  
18V BRUSHLESS  
2 PIECE COMBO KIT

**\$851**  
GREAT VALUE!

**BONUS**  
E-03040-25  
INOX CUTTING DISC  
125mm x 1mm x 22mm  
A60U - 25pk Tub



**LXT**  
DLX3146TX1  
18V BRUSHLESS  
3 PIECE COMBO KIT

**\$1,169**  
GREAT VALUE!

**BONUS**  
E-59053  
NEMESIS-2 SDS-PLUS  
4-CUTTER DRILL BIT SET 7PC  
5.5 - 6 - 6.5 - 7 - 8 & 10mm



**LXT**  
DLX4102T  
18V BRUSHLESS  
4 PIECE COMBO KIT

**\$1,279**  
GREAT VALUE!

**INDEPENDENT EXCLUSIVE**

**BONUS**  
D-67583  
1-10mm M-FORCE HSS  
DRILL BIT 19PC SET



**LXT**  
DLX4190TX1  
18V BRUSHLESS  
4 PIECE COMBO KIT

**\$1,789**  
GREAT VALUE!

Check out the latest  
Redemption Offers



Makita.com.au/promotions

E&OE / H1240-26

**WORK SMART WITH TRADESMART!**





Nothing but **HEAVY DUTY™**



**AUTHORISED  
RETAIL PARTNER**

**REDEEM**

PN: M18FPP2AB3502C

**M18 FUEL™ 2 PIECE  
POWER PACK 2AB3**

M18B5 VIA REDEMPTION

**\$849.00**

REDEEM NOW!

**REDEMPTION**  
M18™  
REDLITHIUM™  
5.0AH  
BATTERY



M18 FUEL

PN: M18FPP3A3502B

**M18 FUEL™ 3 PIECE  
POWER PACK 3A3**

WITH BONUS M18BLHSB0

**BONUS**  
M18™  
BRUSHLESS  
HIGH-SPEED  
BLOWER  
(TOOL ONLY)



**\$1249.00**

GEAT VALUE!



M18 FUEL

PN: M18FOPH20

**M18 FUEL™ QUIK-LOK™ OUTDOOR  
POWER HEAD (TOOL ONLY)**

M18FOPH-LTA OR M18FOPH-CSA OR M18FOPH-EA VIA REDEMPTION



**\$468.00**

REDEEM NOW!

M18 FUEL

**REDEEM**

PN: M18FOPH-LTA

**M18 FUEL™  
LINE TRIMMER  
ATTACHMENT**



OR

**REDEEM**

PN: M18FOPH-CSA

**M18 FUEL™ 10"  
(254MM) POLE  
SAW ATTACHMENT**



OR

**REDEEM**

PN: M18FOPH-EA

**M18 FUEL™  
EDGER  
ATTACHMENT**



**REDEEM – 1 OF 3 ATTACHMENTS TO CHOOSE FROM**

REDEMPTION OFFER VALID BETWEEN 01.08.26 TO 30.09.26

PN: 4932498179

**6 IN 1 IMPACT  
MULTI-NUT  
DRIVER**



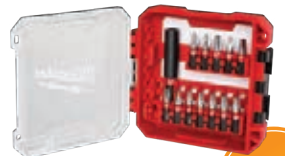
**NEW**

**\$50.00**

NEW PRODUCT!

PN: 48324035

**SHOCKWAVE™ IMPACT  
DRIVER BIT 13PC SET**



SHOCKWAVE  
IMPACT DUTY

**NEW**

**\$32.95**

NEW PRODUCT!

PN: 49666716

**SHOCKWAVE™ 1/4"- 1/2"  
DRIVE ADAPTER SET**



SHOCKWAVE  
IMPACT DUTY

**NEW**

**\$40.75**

NEW PRODUCT!

PN: 48229008

**3/8" DRIVE 56PC RATCHET &  
SOCKET SET SAE & METRIC**

WITH BONUS 48222186



**BONUS**  
9PC METRIC  
L-STYLE WITH  
BALL END HEX  
KEY SET

**\$250.00**

BONUS PRODUCT!

**PURCHASE ALL 3 PRODUCTS BELOW & REDEEM M18FID30**

REDEMPTION OFFER VALID BETWEEN 01.08.26 TO 30.09.26

PN: 48228427

**PACKOUT™  
ROLLING  
TOOL  
BOX LOW  
PROFILE**



**\$398.00**

PURCHASE NO.1

PACKOUT

PN: 48228429

**PACKOUT™  
XL TOOL  
BOX**



**\$250.00**

PURCHASE NO.2

PACKOUT

PN: 48228430

**PACKOUT™ ORGANISER**



**\$118.00**

PURCHASE NO.3

PACKOUT

**REDEMPTION**

PN: M18FID30

**M18  
FUEL™  
1/4" HEX  
IMPACT  
DRIVER  
(TOOL  
ONLY)**



M18 FUEL



**QUALITY YOU CAN COUNT ON**



Nothing but **HEAVY DUTY™**



**AUTHORISED  
RETAIL PARTNER**

**TRADESMART EXCLUSIVE KIT**

**\$1699.00**

EXCLUSIVE KIT!

PN: M18FPP4L3602B

**M18 FUEL™ 4 PIECE  
POWER PACK 4L3**

WITH BONUS M18B5

M18 FUEL

**BONUS**  
M18™  
REDLITHIUM™  
5.0AH BATTERY



PN: M18FPP2F2-502P

**M18 FUEL™ 2 PIECE POWER  
PACK 2F2 (M18ONEFHIWF34-0,  
M18GG-0)**

M18B5 VIA REDEMPTION

**REDEMPTION**  
M18™  
REDLITHIUM™  
5.0AH BATTERY



**\$1329.00**

REDEEM NOW!



M18 FUEL

REDEEM

PN: M12FIW2F38202B

**M12 FUEL™ 3/8" STUBBY IMPACT  
WRENCH WITH FRICTION RING KIT  
(2X 2.0AH, BAG)**

BONUS WITH M12HB2

REDEEM

PN: M18CSX2-0

**M18 FUEL™ SAWZALL™  
RECIPROCATING  
SAW (TOOL ONLY)**

M18FMT-0 VIA REDEMPTION

**\$494.00**

REDEEM NOW!

PN: M18FROS1250

**M18 FUEL™ 125MM RANDOM  
ORBITAL SANDER W/ VACLINK™  
(TOOL ONLY)**

M18HB3 VIA REDEMPTION

**REDEMPTION**  
M18™  
REDLITHIUM™  
HIGH OUTPUT™  
3.0AH BATTERY



**\$389.00**

REDEEM NOW!



M12 FUEL

**BONUS**  
M12™  
REDLITHIUM™  
HIGH OUTPUT™  
2.5AH COMPACT  
BATTERY

**\$599.00**

BONUS PRODUCT!



M18 FUEL

**REDEMPTION**  
M18 FUEL™  
MULTI-TOOL  
(TOOL ONLY)

REDEEM



M18 FUEL

PN: M18FHS80

**M18 FUEL™ HATCHET™ 8"  
(203 MM) PRUNING  
SAW (TOOL ONLY)**

M18BLOBLO VIA REDEMPTION

**\$499.00**

REDEEM NOW!

PN: M18FLT0

**M18 FUEL™ LINE  
TRIMMER  
(TOOL ONLY)**

M18BLOBLO VIA REDEMPTION

**REDEMPTION**  
M18™  
BRUSHLESS  
BLOWER (TOOL  
ONLY)

**\$639.00**

REDEEM NOW!

PN: M18FAG125XPD-0

**M18 FUEL™ 125 MM (5")  
ANGLE GRINDER WITH DEADMAN  
PADDLE SWITCH (TOOL ONLY)**

WITH BONUS 48229507

**BONUS**  
7PC  
COMBINATION  
WRENCH SET  
METRIC

**\$455.00**

BONUS PRODUCT!

**REDEMPTION**  
M18™  
BRUSHLESS  
BLOWER (TOOL  
ONLY)



M18 FUEL

REDEEM

REDEMPTION OFFER VALID  
BETWEEN 01.08.26 TO 30.09.26



M18 FUEL

REDEEM

REDEMPTION OFFER VALID  
BETWEEN 01.08.26 TO 30.09.26



M18 FUEL

PN: 49667015

**SHOCKWAVE™  
1/2" DRIVE 29PC  
METRIC DEEP 6  
POINT IMPACT  
SOCKET SET**

WITH BONUS 49667830

PN: 48325105

**SHOCKWAVE™  
86PC DRIVE KIT  
COMPREHENSIVE  
SET**

WITH BONUS 4932498770T

**\$132.00**

BONUS PRODUCT!

**BONUS**  
8M COMPACT  
MAGNETIC TAPE  
MEASURE



PN: 48229513

**15P FLEX-HEAD RATCHETING  
WRENCH SET – METRIC**

WITH BONUS 48227408

**BONUS**  
ADJUSTABLE  
WRENCH  
200MM/8"

**\$343.00**

BONUS PRODUCT!

**\$208.00**

BONUS PRODUCT!



**BONUS**  
SHOCKWAVE™  
1/2" DRIVE  
3PC LUG NUT  
SOCKET SET  
(17MM, 19MM,  
21MM)

SHOCKWAVE  
IMPACT DUTY



SHOCKWAVE  
IMPACT DUTY



NOW AVAILABLE! OFFER VALID FROM 1ST JULY TO THE 30TH SEPTEMBER 2026. REDEMPTIONS Terms and Conditions apply, see website for details. Offers valid during the promotional period 1st July until 30th September 2026. Online redemption must be claimed by 14th October 2026. Please allow up to 4-6 weeks for delivery. <https://www.milwaukeeeetool.com.au/terms-and-conditions-redemption.html>

**RED HOT DEALS!**





FROM \$99



### 8 STAGE MULTI-VOLT SMART BATTERY CHARGERS

- LEAD ACID • GEL
- AGM • LITHIUM
- Zero volt minimum start - can charge a completely flat battery

MODEL	CURRENT OUTPUT	OUTPUT VOLTAGE	PRICE
SP61075	3.5 Amp	6 & 12 Volt	\$99
SP61078	6 Amp	6 & 12 Volt	\$159
SP61084	15 Amp	6, 12 & 24 Volt	\$289
SP61086	26 Amp	6, 12 & 24 Volt	\$369



\$79 SP61072



**TRICKLE CHARGING**  
Ideal for maintaining batteries in equipment or vehicles that aren't used regularly.

### 6/12V 2.0A SMART BATTERY/TRICKLE CHARGER

Perfect for long-term maintenance, it automatically switches to float mode to prevent overcharging and restarts again once the battery voltage drops over time.



### 12V JUMP STARTERS

12V 2000A 7L 5L \$319

12V 3000A 9L 7L \$439

### 12/24V 4300A JUMP STARTER

Large capacity onboard Lithium-ion power bank allows you to power or charge your low voltage smartphones, tablets and similar USB devices on the go.

#### JUMP START

Jump start all 12V petrol engines, 12V diesel engines up to 10L and 24V diesel engines up to 6L

#### LIGHT STRIP

Five light modes, including emergency strobe and SOS

#### POWER BANK

Power or charge low-voltage smartphones, tablets and similar USB devices on the go.



\$899

SP61097

## Alpha AUSTSAW

### POLYCRYSTALLINE DIAMOND BLADE

160mm (6 1/4")  
20/16mm BORE  
4PCD 4TCT TEETH



- Designed for cutting Drywall, Plaster/Board/Tiles, Fibreglass, Plastic, Wood

\$11900 INC GST PGD160



125mm (5")  
x 22.2mm x 20 T

\$5895 INC GST RHS12522220

### EXTREME ROTARY HACKSAW BLADES

- Next Generation Multi-Cut Blade
- » Heat Free
- » Dust Free
- » Burr Free

103mm (4")  
x 16mm x 20 T

\$4995 INC GST RHS1031620

### EXTREME WOOD WITH NAILS

### WOOD WITH NAILS BLADES

The Ultimate TCT wood with nails blade. Designed for extreme performance by the most demanding users.



165mm  
20/16 - 24T

\$3195 INC GST TBPP1652024

165mm  
20/16 - 40T

\$3900 INC GST TBPP1652040

185mm  
20/16 - 24T

\$3700 INC GST TBPP1852024

185mm  
20/16 - 40T

\$3900 INC GST TBPP1852040

### P/N: BMPD-H120 BULLMAX SUPER MAXI POST DRIVER

Bullmax Super Maxi Post Driver, powered by Honda GX50 engine, designed to drive in 100mm strainer posts 55, 75, 80, 98mm piling sockets, dolly to fit 100NB pipe, 120mm post guide housing, storage and transport trolley included. Honda GX 3 year warranty, assembled in Australia.



\$3350 GREAT VALUE!



### P/N: BMEACL-H35GL BULLMAX 1 PERSON EARTH AUGER WITH SAFETY CLUTCH

Bullmax 1 person Earth Auger with safety clutch, powered by Honda GX35 engine, heavy duty gear box, includes 450mm extension bar & 100, 150 & 200mm auger drills with replaceable cutting blades, shear bolts for safety. Honda GX 3 year warranty, assembled in Australia.



\$1595 GREAT VALUE!



### P/N: BMPW-3200 BULLMAX PRESSURE WASHER

Bullmax Pressure Washer, 7HP 4-stroke engine, 3200PSI, 10L min water flow, heavy duty axial pump, high pressure retractable hose reel, large pneumatic wheels. Bullmax 12 month warranty.



\$999 GREAT VALUE!



# PUREGAS



- Own your gas bottle
- No rental or lease fees
- No waiting - exchange on the spot
- No contracts or admin fees
- Pay for the gas only
- No hidden or low use charges

ARGON | ARGON MIX | OXYGEN | ACETYLENE | CARBON DIOXIDE | NITROGEN

**TRADESMART MEMBERS:** ACT: • Fyshwick NSW: • Albion Park Rail • Albury • Banksmeadow • Bega • Beresfield • Broken Hill • Casino • Coffs Harbour • Coonamble • Cootamundra • Corowa • Cowra • Dubbo • Erina • Forbes • Goulburn • Gunnedah • Hay • Moorebank • Mudgee • Mullumbimby • Muswellbrook • Narrabri • Narellan • Penrith • Seven Hills • Silverwater • Tamworth • Tomago • Tumut • Wetherill Park  
NT: • Alice Springs • Darwin QLD: • Atherton • Beaudesert • Biloela • Blackwater • Bowen • Bundaberg • Cairns • Charleville • Charters Towers • Chinchilla • Clermont • Coomera • Hemmant • Hughenden • Longreach • Mackay • Mareeba • Moranbah • Mount Isa • Proserpine • Rockhampton • Roma • Springsure • Stanthorpe • Stapylton • Toowoomba • Townsville • Tully • Yatala SA: • Berri • Edwardstown • Kilburn • Penola  
TAS: • Invermay • Ulverstone VIC: • Bayswater • Bendigo • Clayton • Cobram • Dandenong • Geelong North • Horsham • Laverton Nth • Mildura • Robinvale • Shepparton • Traralgon • Tullamarine  
WA: • Albany • Bibra Lake • Busselton • Carlisle • Geraldton • Kalgoorlie • Maddington • Moora • Narrogin • Northam • Osborne Park • Port Hedland • Port Kennedy • Rockingham • Welshpool

**ALL PRICES INCLUDE GST:** Some products are subject to plus freight costs where applicable. Some advertised products may not be available at all stores & maybe subject to availability. Prices are valid while stocks last and we reserve the right to correct any errors or omissions without prior notice. Images shown throughout this catalogue are for illustrative purposes only - some items may vary.

follow us TradeSmartIndustrial

PRINTED BY: PROMINENT GROUP